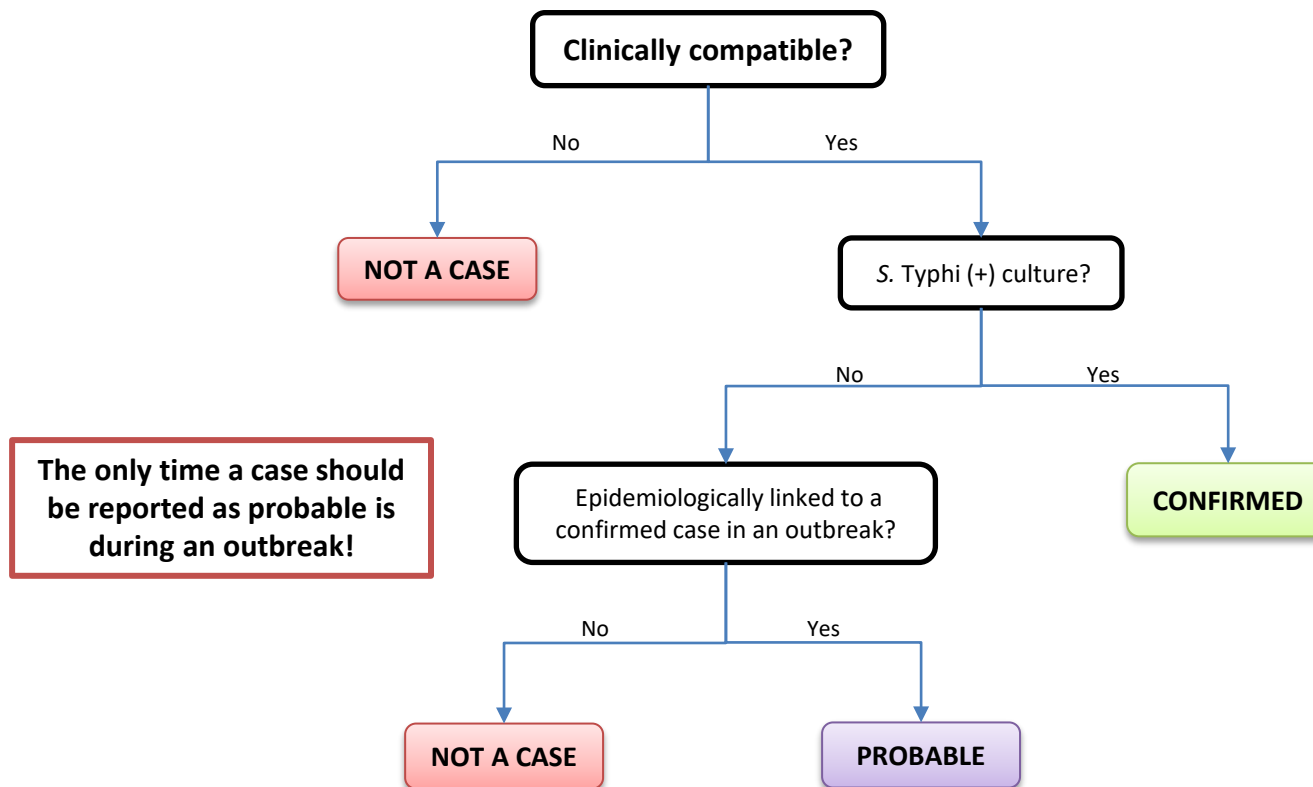


Typhoid Fever

COMMON NAME: *Salmonella* Typhi, enteric fever

EXCLUDES: All other *Salmonellas* including *Salmonella* Typhimurium. See Salmonellosis case definition.



Clinical Description:
 An illness often characterized by insidious onset of sustained fever, headache, malaise, anorexia, slow heart rate, constipation or diarrhea, and nonproductive cough. However, many mild and atypical infections occur. Carriage of *S. Typhi* may be prolonged.

Critical Reporting Elements and Comments:

- Include relevant travel and deployment history occurring within the incubation period (3–60 days, often 8–14 days).
- Note the patient’s typhoid immunization history.

NOTE: *Salmonella Typhi* and *Salmonella Typhimurium* are not the same organisms. *S. Typhimurium* is reportable under Salmonellosis.