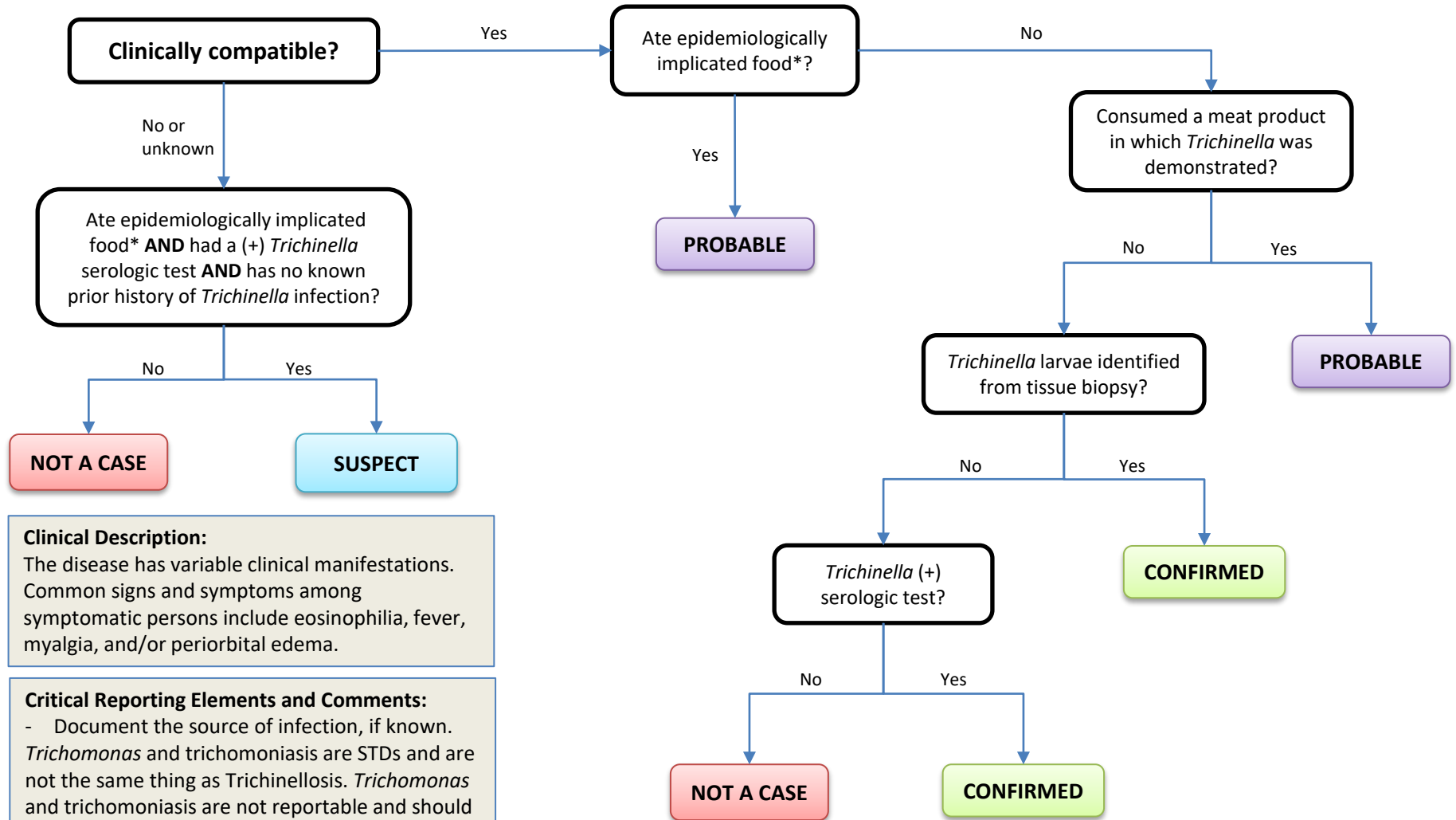


Trichinellosis



Clinical Description:

The disease has variable clinical manifestations. Common signs and symptoms among symptomatic persons include eosinophilia, fever, myalgia, and/or periorbital edema.

Critical Reporting Elements and Comments:

- Document the source of infection, if known.
- Trichomonas* and trichomoniasis are STDs and are not the same thing as Trichinellosis. *Trichomonas* and trichomoniasis are not reportable and should not be reported as Trichinellosis.
- * An epidemiologically implicated food is defined as food that was consumed by a person who subsequently became a confirmed case.