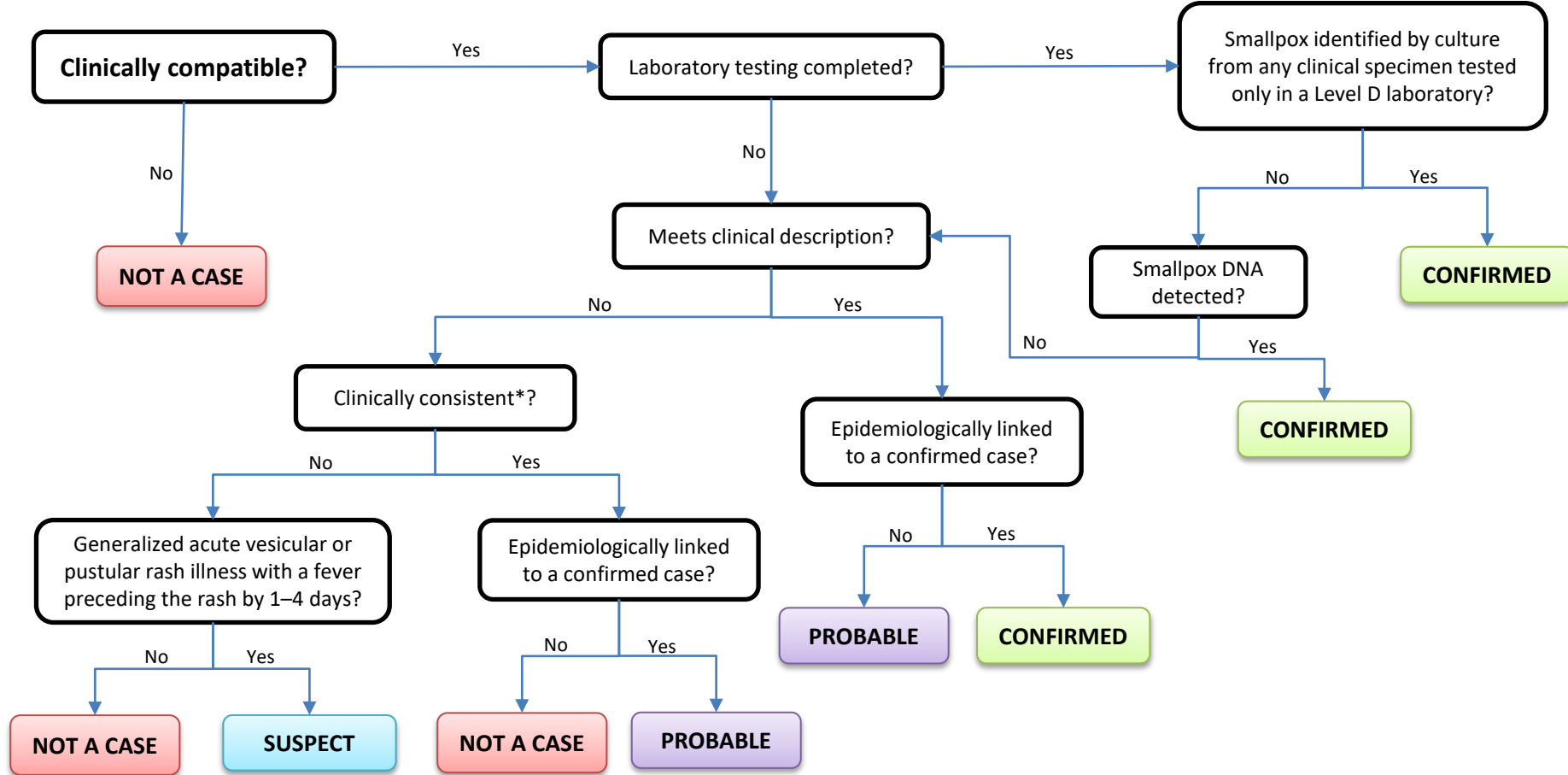


# Smallpox

EXCLUDES: Vaccinations and vaccine adverse events.



**Clinical Description:**  
 An illness with acute onset of fever  $\geq 101^{\circ}$  F ( $\geq 38^{\circ}$  C) followed by a rash characterized by firm, deep-seated vesicles or pustules in the same stage of development without other apparent cause.

**Critical Reporting Elements and Comments:**

- Document the source of infection, if known.
- Document the circumstances under which the case patient was exposed, including duty exposure, occupational activities, environmental exposures, or other high-risk activities.

\* **Clinically consistent** cases are presentations of smallpox that do not meet the classical clinical description and include a) hemorrhagic type, b) flat type, and c) *variola sine eruption*.