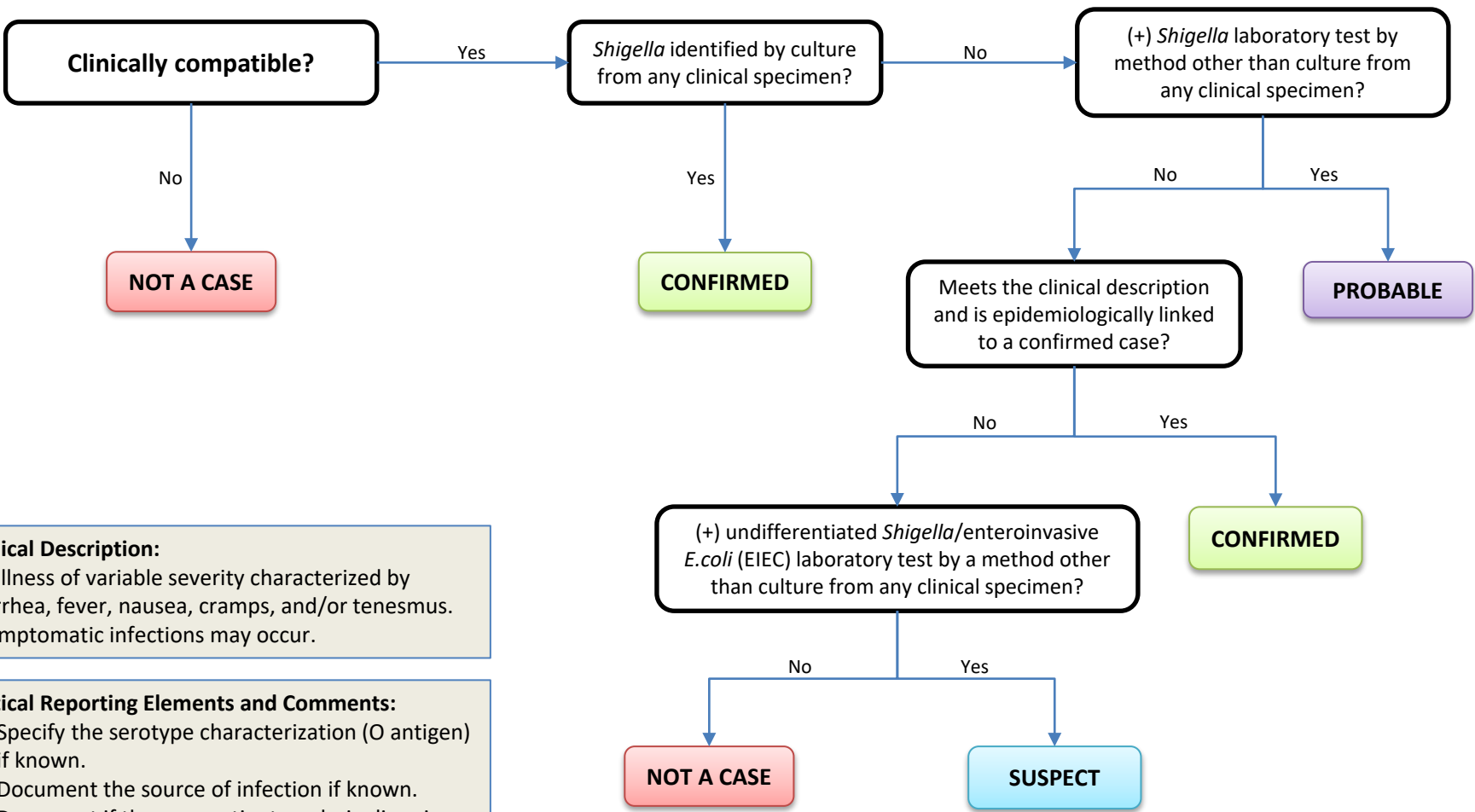


Shigellosis



Clinical Description:
 An illness of variable severity characterized by diarrhea, fever, nausea, cramps, and/or tenesmus. Asymptomatic infections may occur.

Critical Reporting Elements and Comments:

- Specify the serotype characterization (O antigen) if known.
- Document the source of infection if known.
- Document if the case patient works in, lives in, or attends a high transmission setting such as food handling, day care, school, group living, healthcare, training center, or ship.

Identification of Shiga toxin is presumptive for *E. coli* and should not be reported as shigellosis.