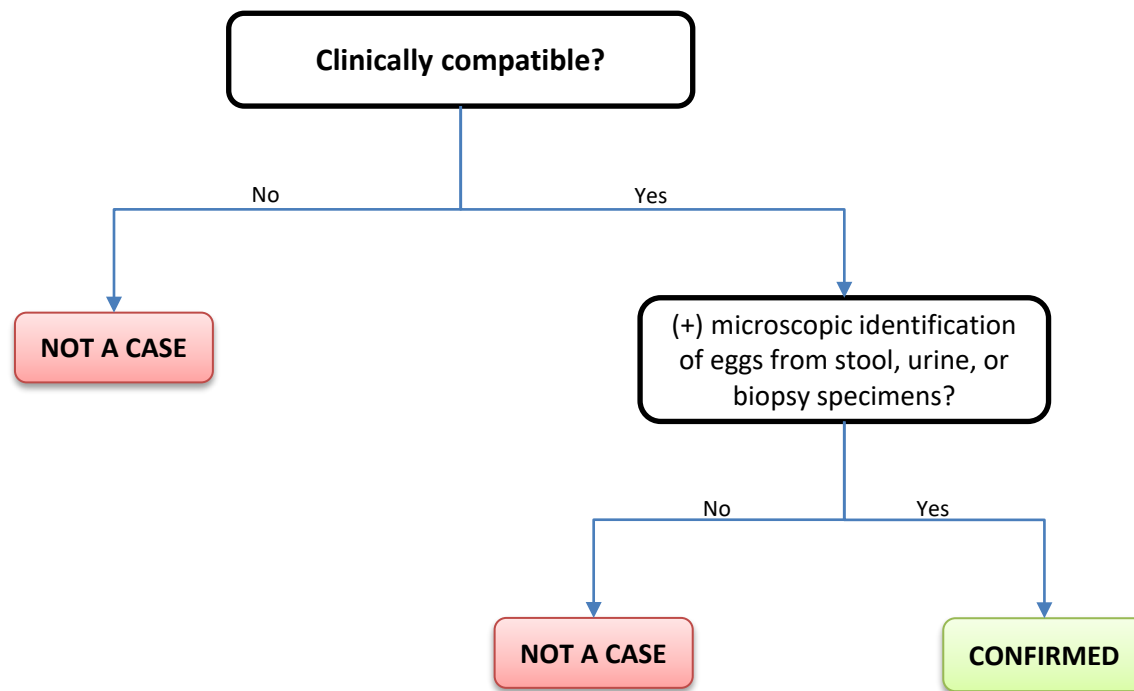


# Schistosomiasis



## Clinical Description:

Urinary schistosomiasis: gives rise to dysuria, frequency, and hematuria at the end of urination, usually caused by *Schistosoma haematobium*.

Intestinal schistosomiasis: is accompanied by diarrhea, abdominal pain, and hepatosplenomegaly, and is caused by *Schistosoma mansoni* and *Schistosoma japonicum*.

## Critical Reporting Elements and Comments:

- Specify the clinical form of the disease.
- Document relevant travel and deployment history occurring within the incubation period (2–6 weeks).
- Document the circumstances under which the case patient was exposed, including duty exposure, occupational activities, environmental exposures, or other high-risk activities.