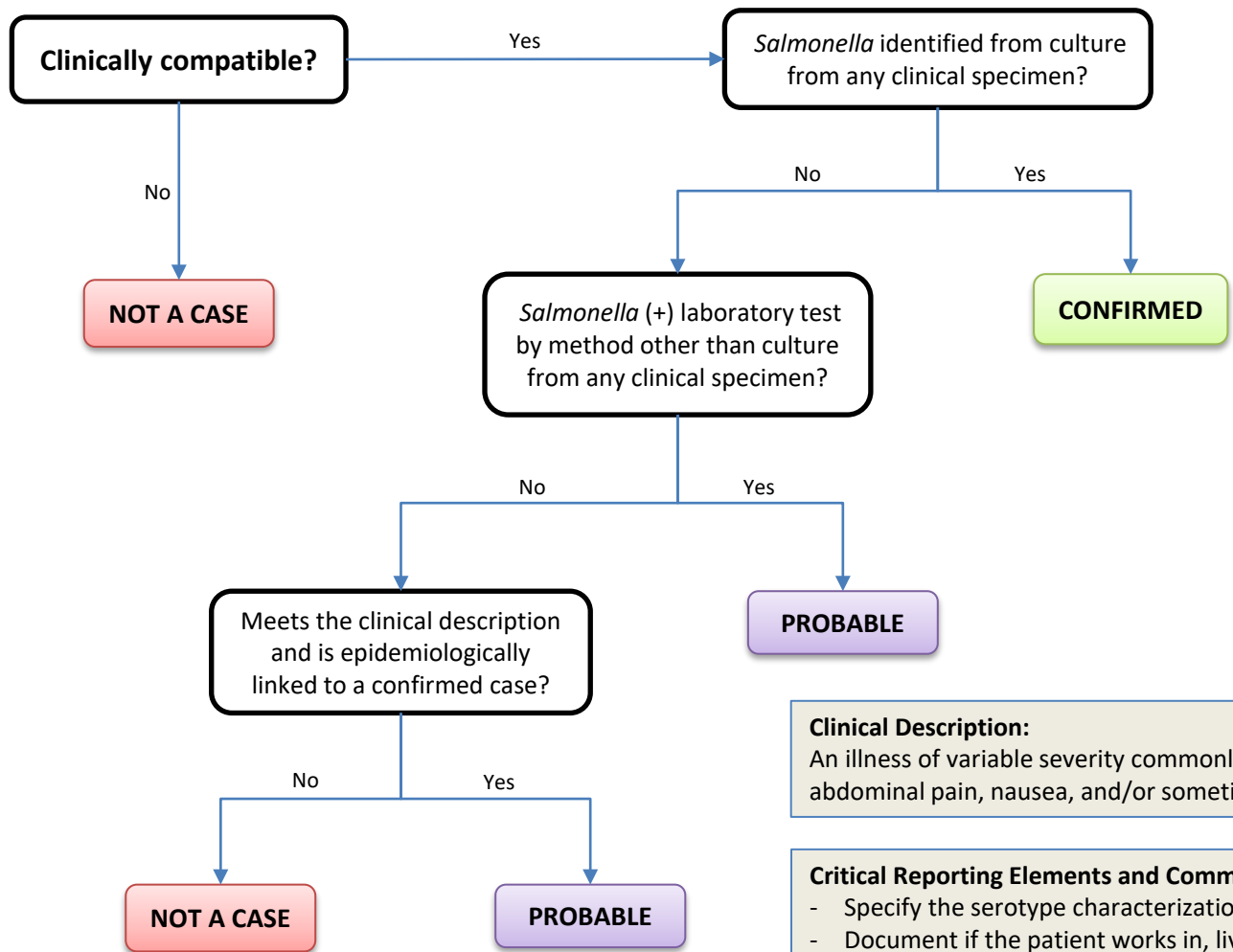


# Salmonellosis

INCLUDES: *Salmonella* species, including *Salmonella* Paratyphi.  
EXCLUDES: *Salmonella* Typhi. See Typhoid Fever case definition.



**Clinical Description:**  
An illness of variable severity commonly manifested by diarrhea, abdominal pain, nausea, and/or sometimes vomiting.

- Critical Reporting Elements and Comments:**
- Specify the serotype characterization (O and H antigen), if known.
  - Document if the patient works in, lives in, or attends a high-transmission setting such as food handling, daycare, school, group living, health care, training center, or ship.