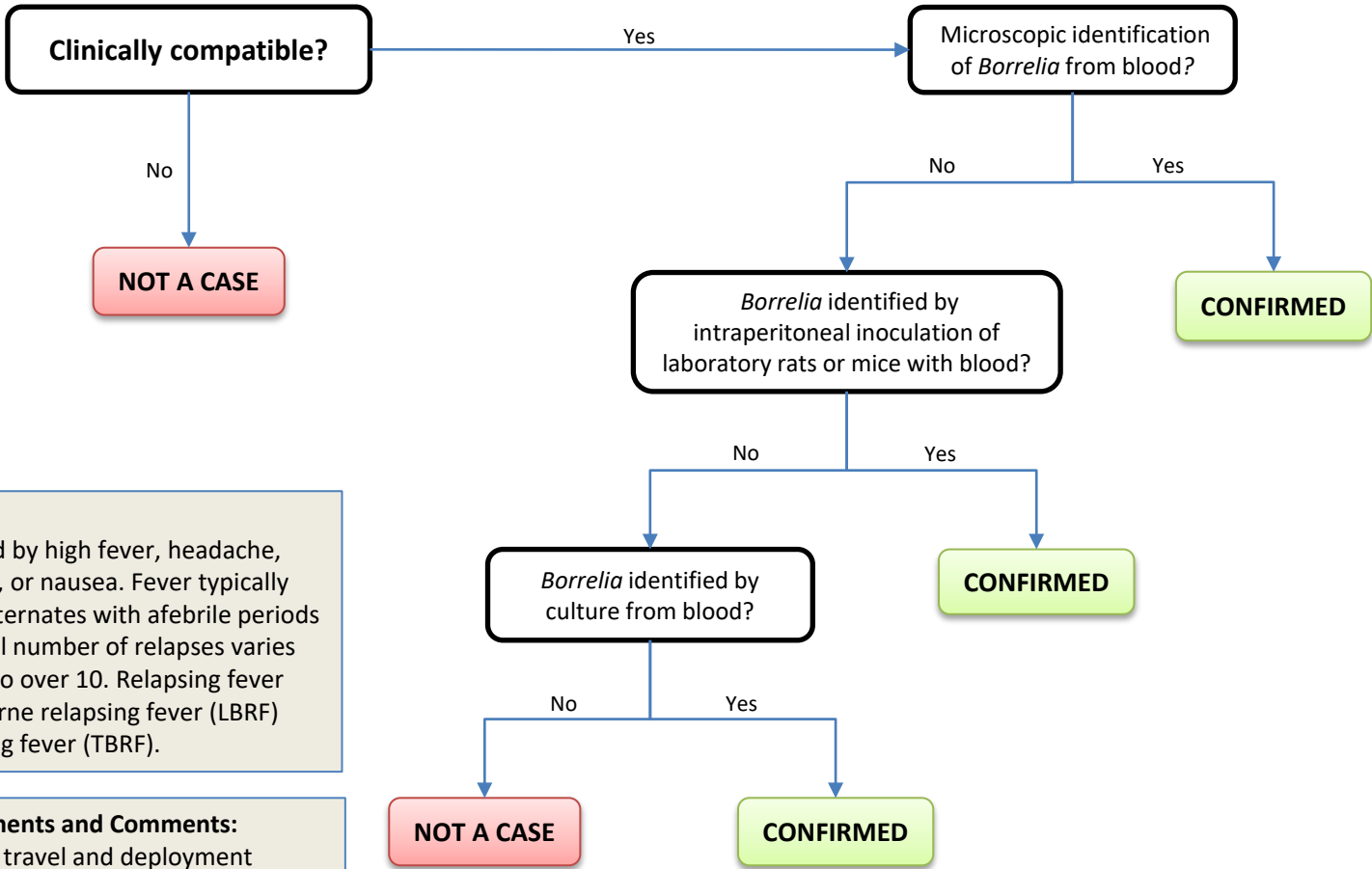


Relapsing Fever

COMMON NAME: Tick-borne relapsing fever (TBRF), louse-borne relapsing fever (LBRF)



Clinical Description:
 An illness characterized by high fever, headache, muscle and joint aches, or nausea. Fever typically lasts 2 to 9 days and alternates with afebrile periods of 2 to 4 days. The total number of relapses varies from a single incident to over 10. Relapsing fever includes both louse-borne relapsing fever (LBRF) and tick-borne relapsing fever (TBRF).

Critical Reporting Elements and Comments:

- Document relevant travel and deployment history occurring within the incubation period (5–15 days for LBRF, 2–18 days for TBRF).
- Document the circumstances under which the case patient was exposed including duty exposure, occupational activities, environmental exposures, or other high-risk activities.