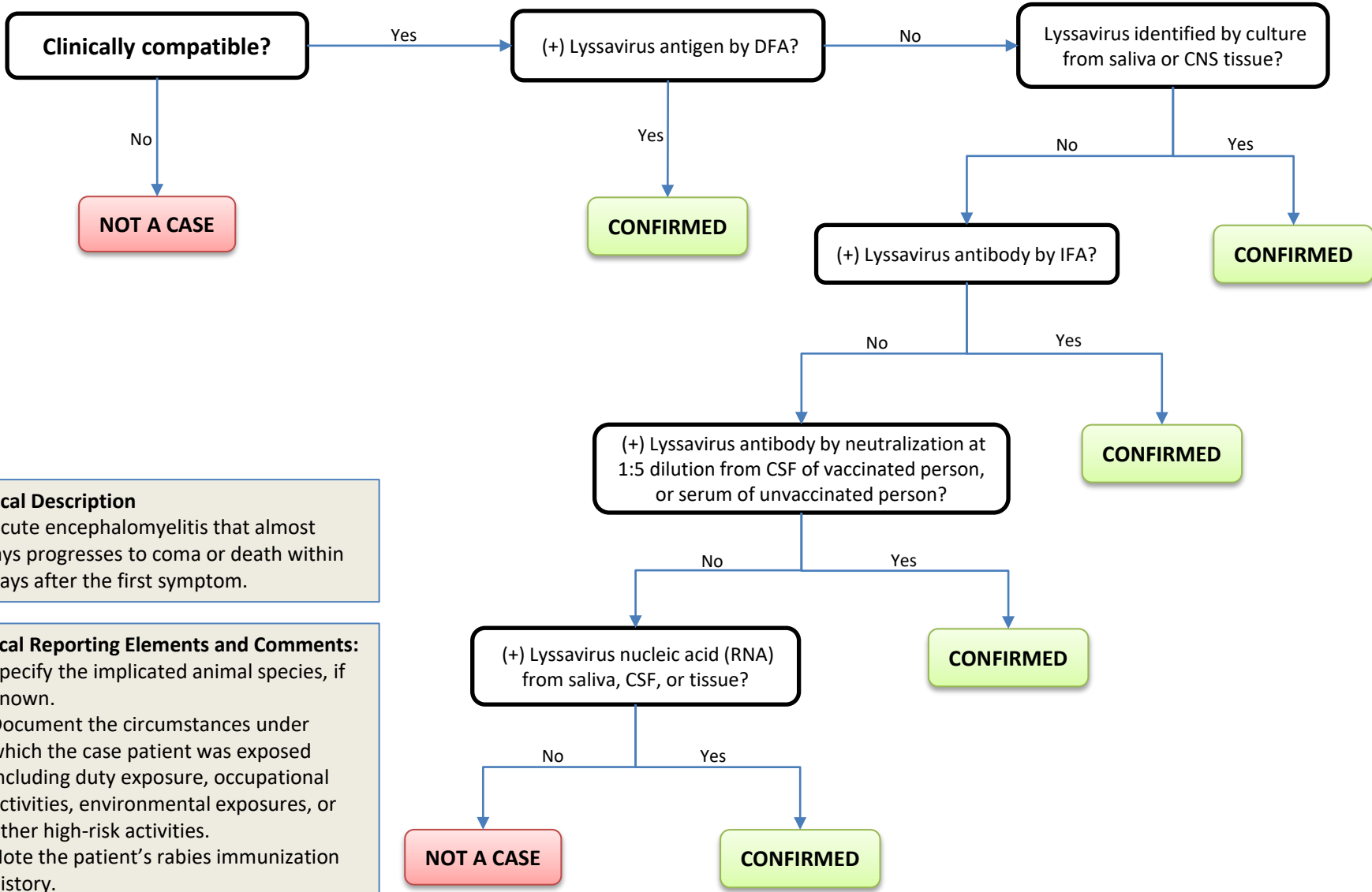


# Rabies, Human



**Clinical Description**  
 An acute encephalomyelitis that almost always progresses to coma or death within 10 days after the first symptom.

- Critical Reporting Elements and Comments:**
- Specify the implicated animal species, if known.
  - Document the circumstances under which the case patient was exposed including duty exposure, occupational activities, environmental exposures, or other high-risk activities.
  - Note the patient’s rabies immunization history.