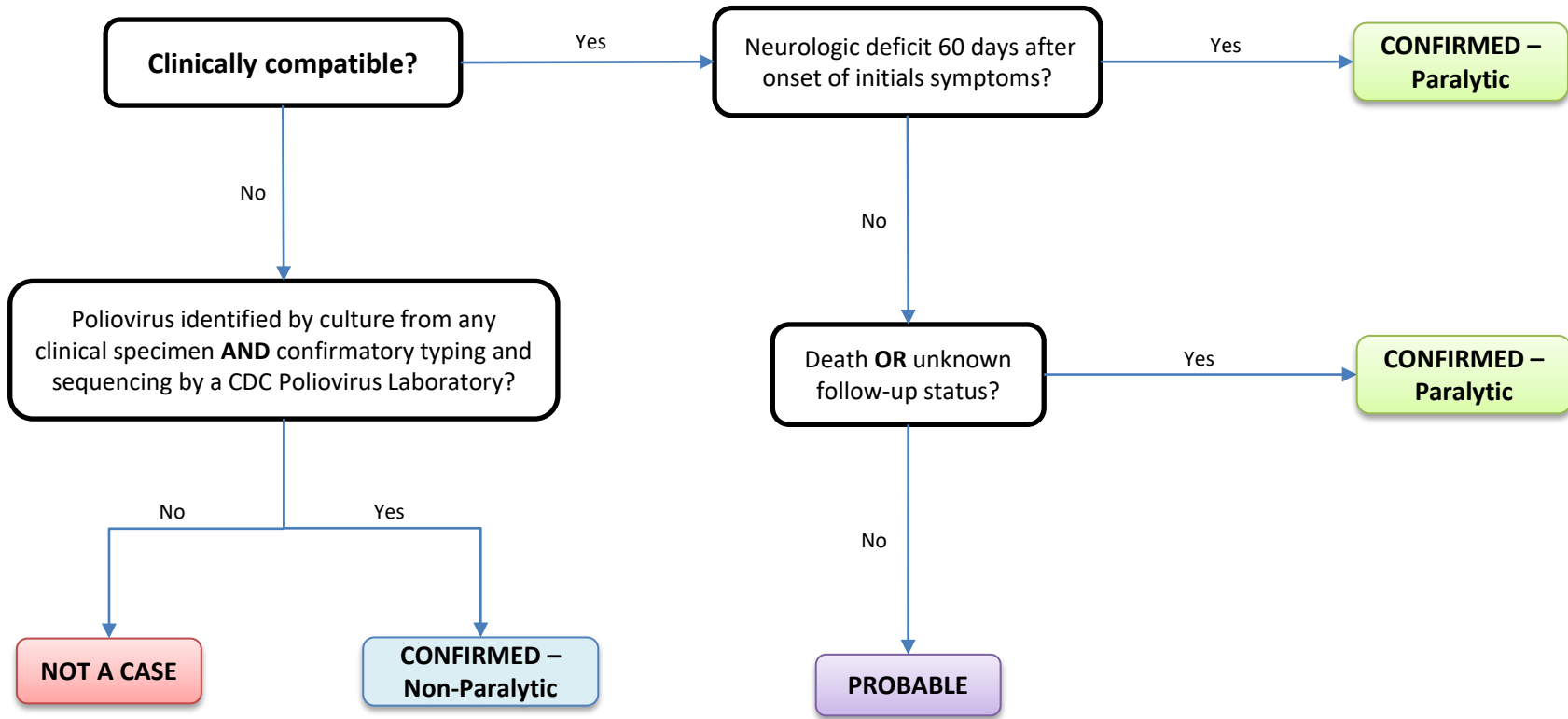


Poliomyelitis



Clinical Description and Clinical Forms:
Paralytic: Acute onset of a flaccid paralysis of one or more limbs with decreased or absent tendon reflexes in the affected limbs, without other apparent cause, and without sensory or cognitive loss
Non-Paralytic: A case without symptoms of paralytic poliomyelitis

Critical Reporting Elements and Comments:

- Specify the clinical form of the disease.
- Document relevant travel and deployment history occurring within the incubation period (3–35 days).
- Note the patient’s poliomyelitis immunization history.