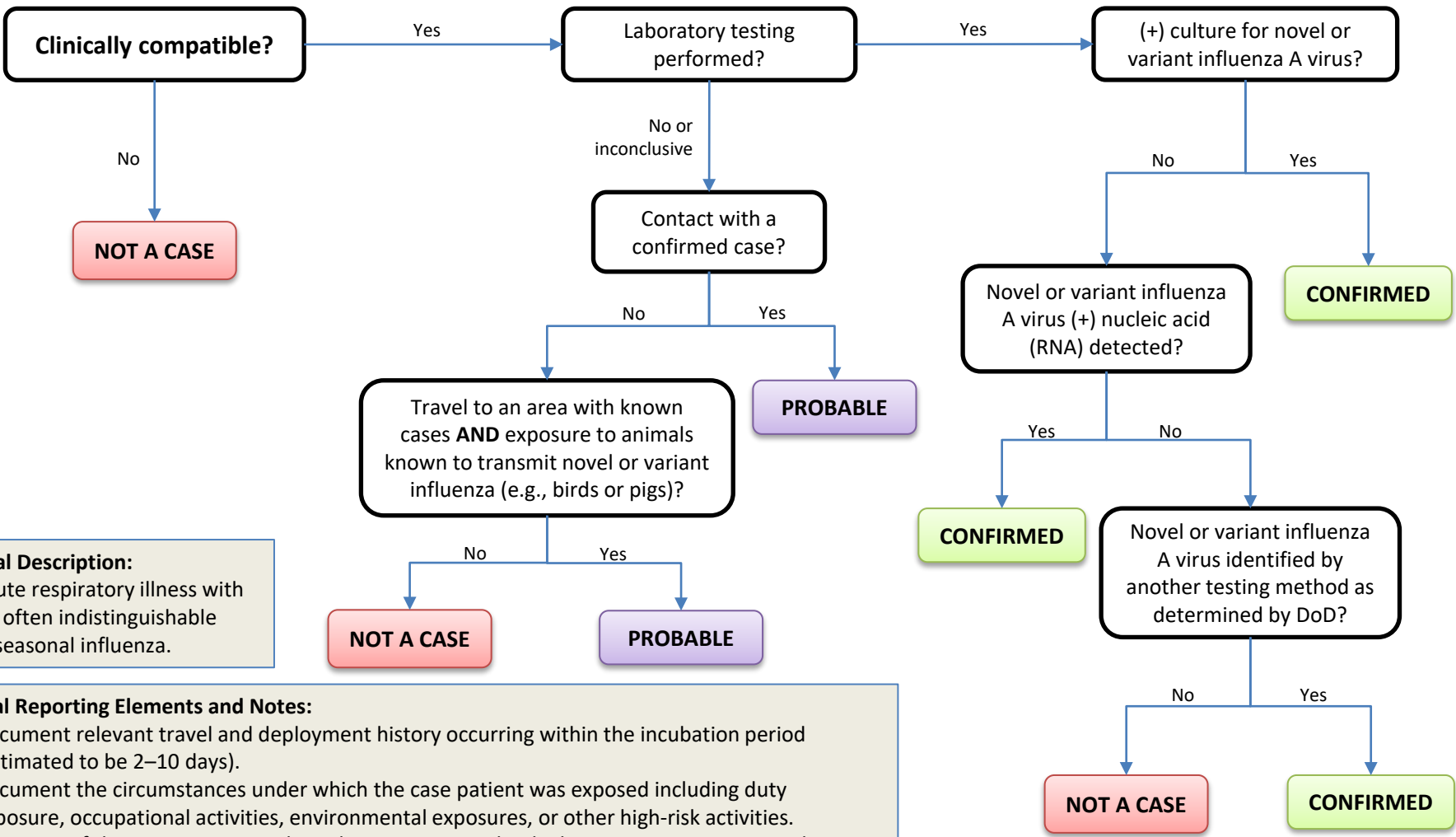


Novel and Variant Influenza

INCLUDES: Hospitalized and non-hospitalized cases

EXCLUDES: Seasonal influenza or influenza caused by current circulating influenza H1 and H3 viruses



Clinical Description:
An acute respiratory illness with fever, often indistinguishable from seasonal influenza.

Critical Reporting Elements and Notes:

- Document relevant travel and deployment history occurring within the incubation period (estimated to be 2–10 days).
- Document the circumstances under which the case patient was exposed including duty exposure, occupational activities, environmental exposures, or other high-risk activities.
- Document if the case patient works in, lives in, or attends a high transmission setting such as food handling, daycare, school, group living, health care, training center, or ship.

NOTE: Influenza A (H1N1)pdm09 is no longer reportable as novel influenza.