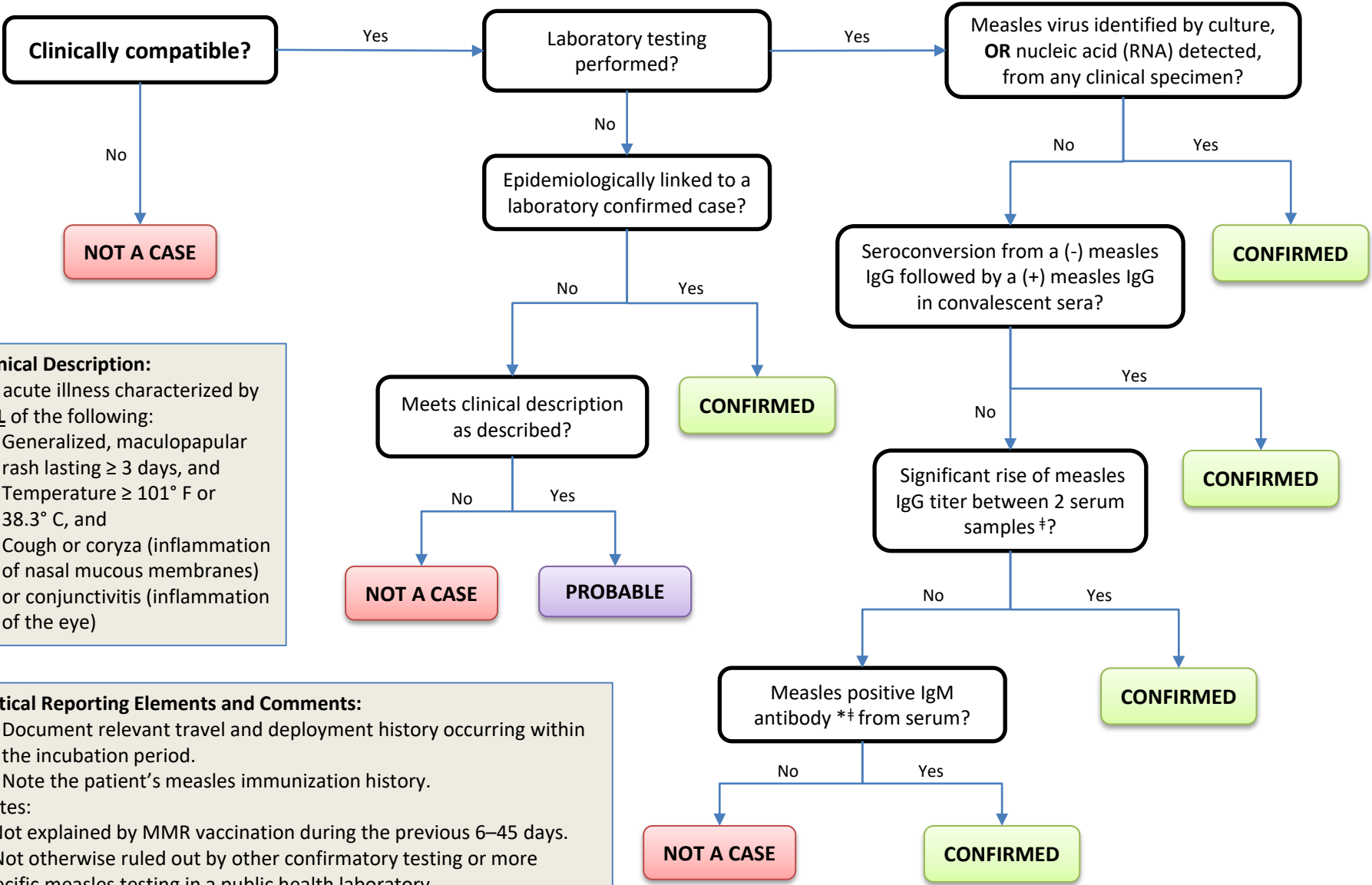


Measles

COMMON NAME: Rubeola



Clinical Description:
 An acute illness characterized by **ALL** of the following:

- Generalized, maculopapular rash lasting ≥ 3 days, and
- Temperature ≥ 101° F or 38.3° C, and
- Cough or coryza (inflammation of nasal mucous membranes) or conjunctivitis (inflammation of the eye)

Critical Reporting Elements and Comments:

- Document relevant travel and deployment history occurring within the incubation period.
- Note the patient’s measles immunization history.

Notes:
 * Not explained by MMR vaccination during the previous 6–45 days.
 † Not otherwise ruled out by other confirmatory testing or more specific measles testing in a public health laboratory.