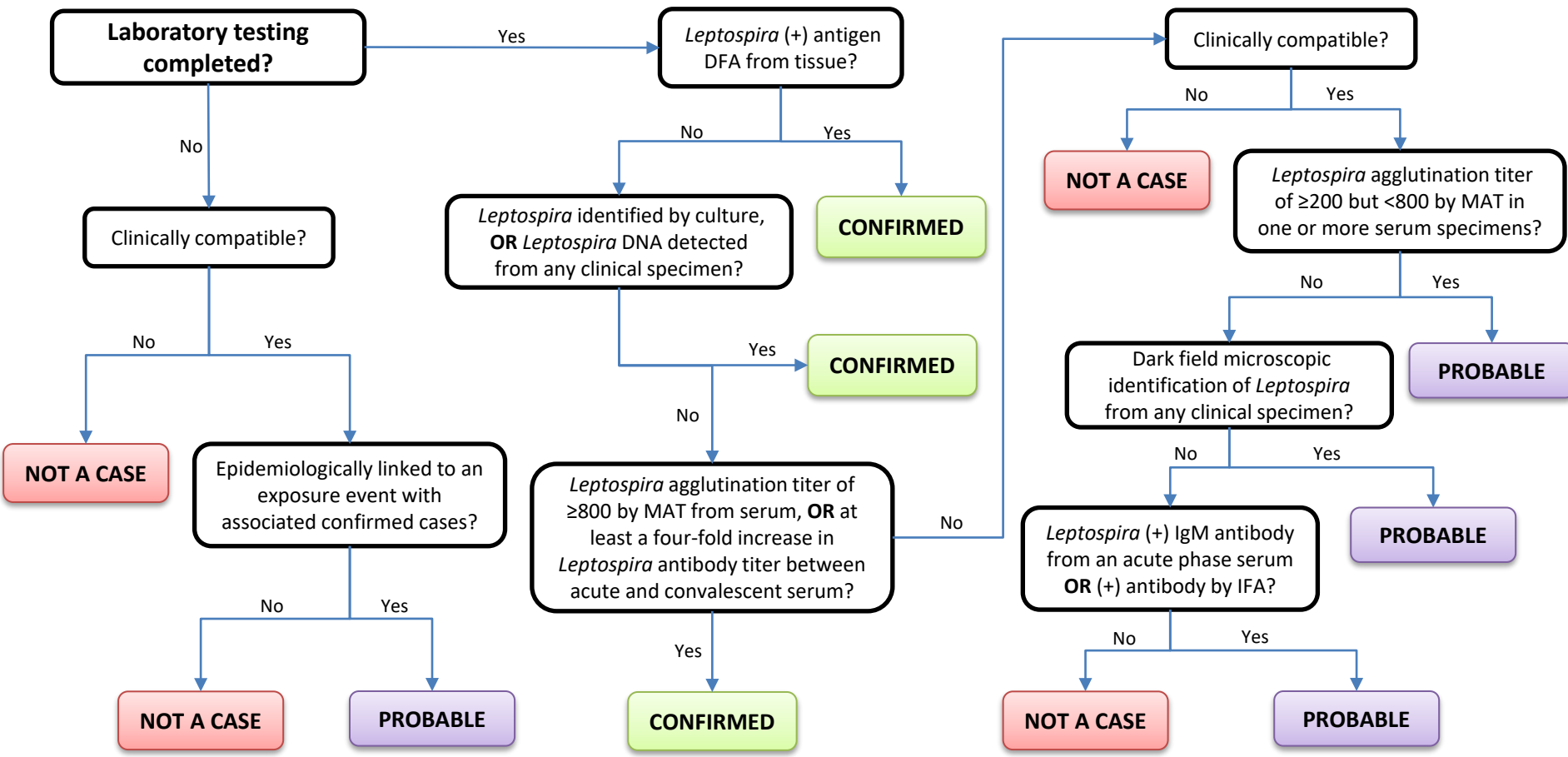


Leptospirosis

COMMON NAME: Weil's disease



Clinical Description:
 An illness characterized by history of fever within the past 2 weeks, as well as—

- At least two of the following: Myalgia, headache, jaundice, conjunctival suffusion without purulent discharge, or rash; OR
- At least one of the following: aseptic meningitis, GI symptoms, pulmonary complications, cardiac arrhythmias, ECG abnormalities, renal insufficiency, hemorrhage, or jaundice with acute renal failure.

Critical Reporting Elements and Comments:

- Document relevant travel and deployment history occurring within the incubation period (2–30 days, typically 5–14 days).
- Document circumstances under which the case patient was exposed including duty exposure, occupational activities, environmental exposures, or other high-risk activities.