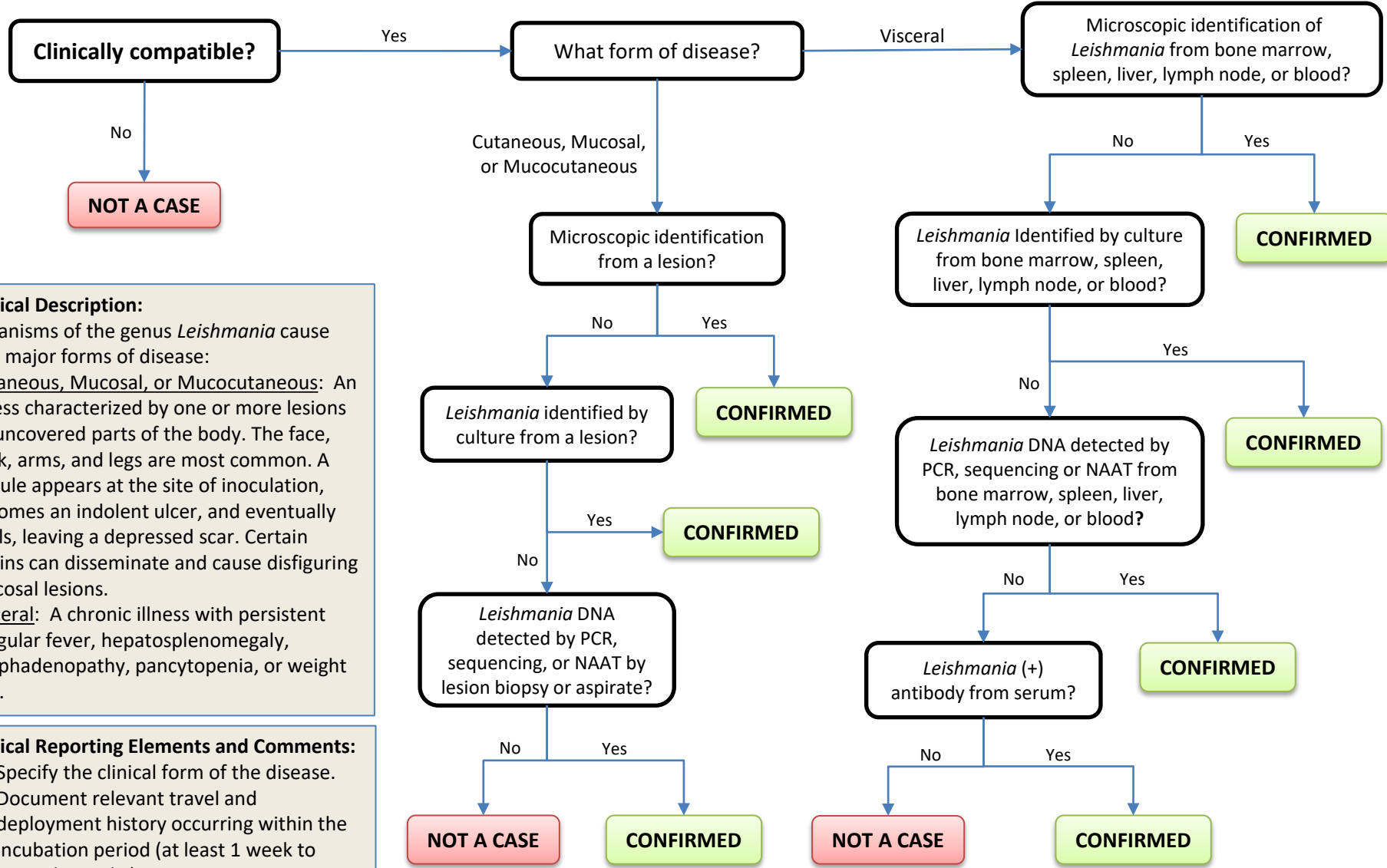


Leishmaniasis



Clinical Description:
 Organisms of the genus *Leishmania* cause two major forms of disease:
Cutaneous, Mucosal, or Mucocutaneous: An illness characterized by one or more lesions on uncovered parts of the body. The face, neck, arms, and legs are most common. A nodule appears at the site of inoculation, becomes an indolent ulcer, and eventually heals, leaving a depressed scar. Certain strains can disseminate and cause disfiguring mucosal lesions.
Visceral: A chronic illness with persistent irregular fever, hepatosplenomegaly, lymphadenopathy, pancytopenia, or weight loss.

Critical Reporting Elements and Comments:

- Specify the clinical form of the disease.
- Document relevant travel and deployment history occurring within the incubation period (at least 1 week to several months).