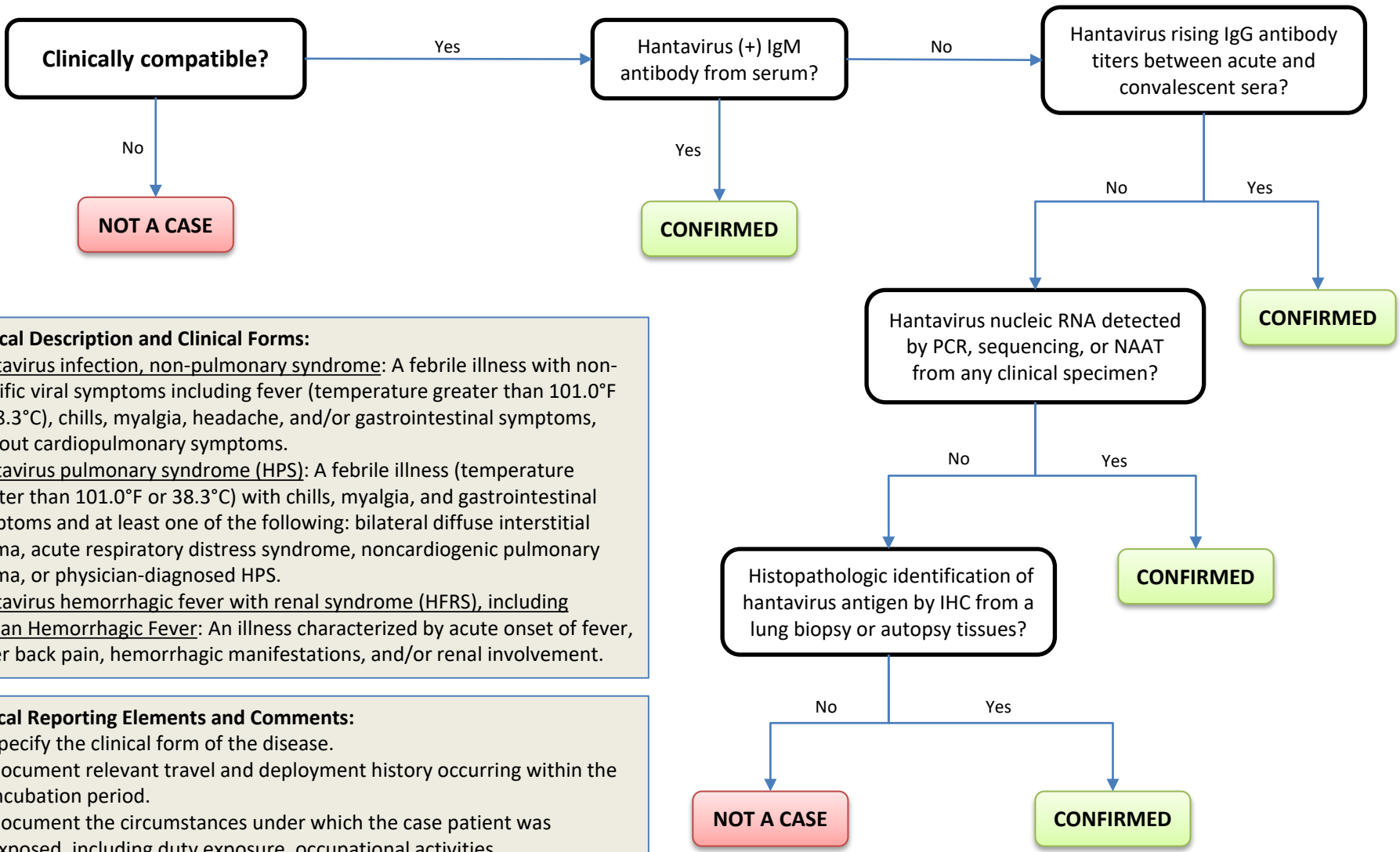


# Hantavirus Disease

COMMON NAME: Korean hemorrhagic fever, hemorrhagic fever with renal syndrome (HFRS)



**Clinical Description and Clinical Forms:**

Hantavirus infection, non-pulmonary syndrome: A febrile illness with non-specific viral symptoms including fever (temperature greater than 101.0°F or 38.3°C), chills, myalgia, headache, and/or gastrointestinal symptoms, without cardiopulmonary symptoms.

Hantavirus pulmonary syndrome (HPS): A febrile illness (temperature greater than 101.0°F or 38.3°C) with chills, myalgia, and gastrointestinal symptoms and at least one of the following: bilateral diffuse interstitial edema, acute respiratory distress syndrome, noncardiogenic pulmonary edema, or physician-diagnosed HPS.

Hantavirus hemorrhagic fever with renal syndrome (HFRS), including Korean Hemorrhagic Fever: An illness characterized by acute onset of fever, lower back pain, hemorrhagic manifestations, and/or renal involvement.

**Critical Reporting Elements and Comments:**

- Specify the clinical form of the disease.
- Document relevant travel and deployment history occurring within the incubation period.
- Document the circumstances under which the case patient was exposed, including duty exposure, occupational activities, environmental exposures, or other high-risk activities.