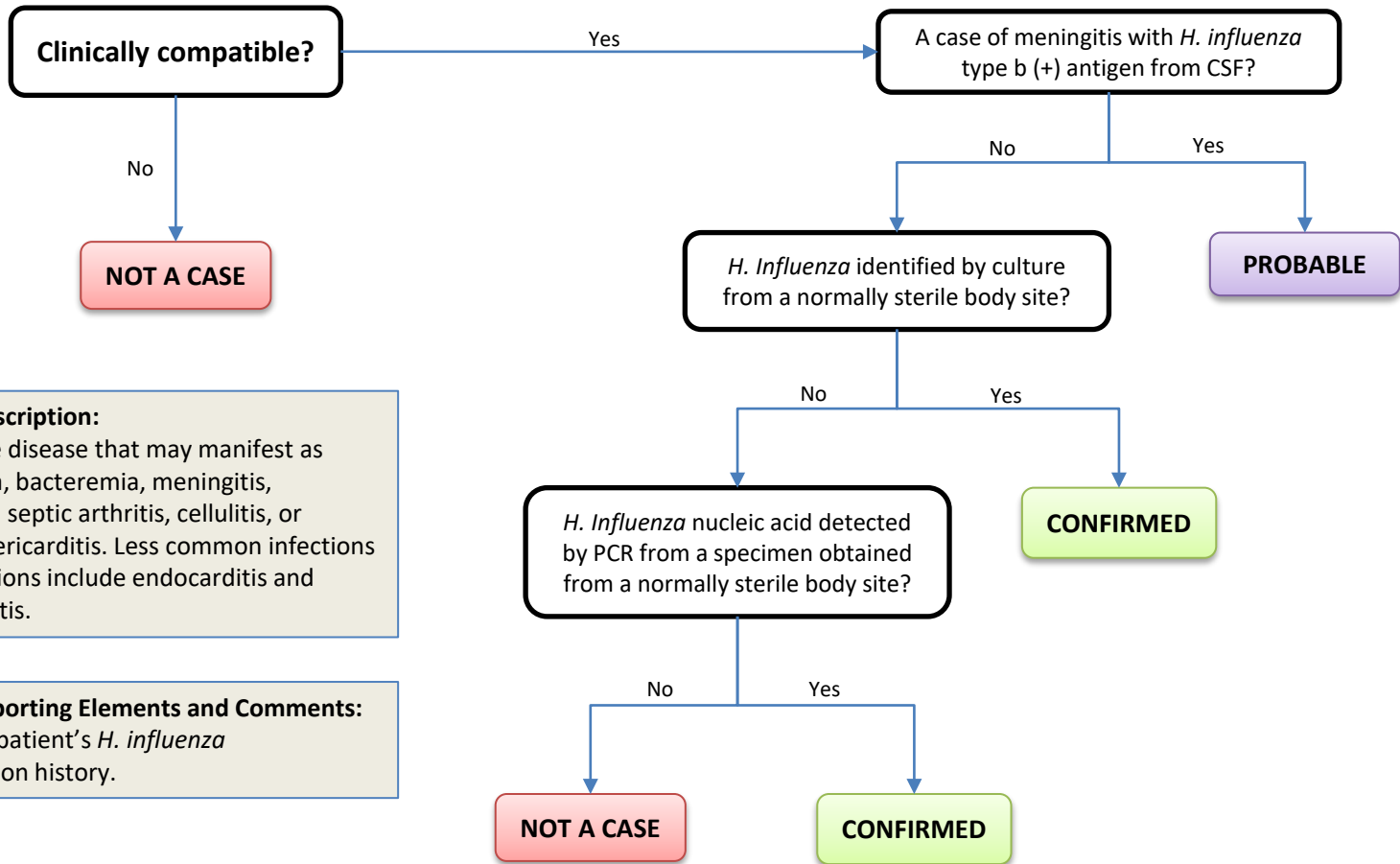


Haemophilus influenzae, Invasive

EXCLUDES: Conjunctivitis



Clinical Description:
 An invasive disease that may manifest as pneumonia, bacteremia, meningitis, epiglottitis, septic arthritis, cellulitis, or purulent pericarditis. Less common infections manifestations include endocarditis and osteomyelitis.

Critical Reporting Elements and Comments:
 - Note the patient's *H. influenzae* immunization history.