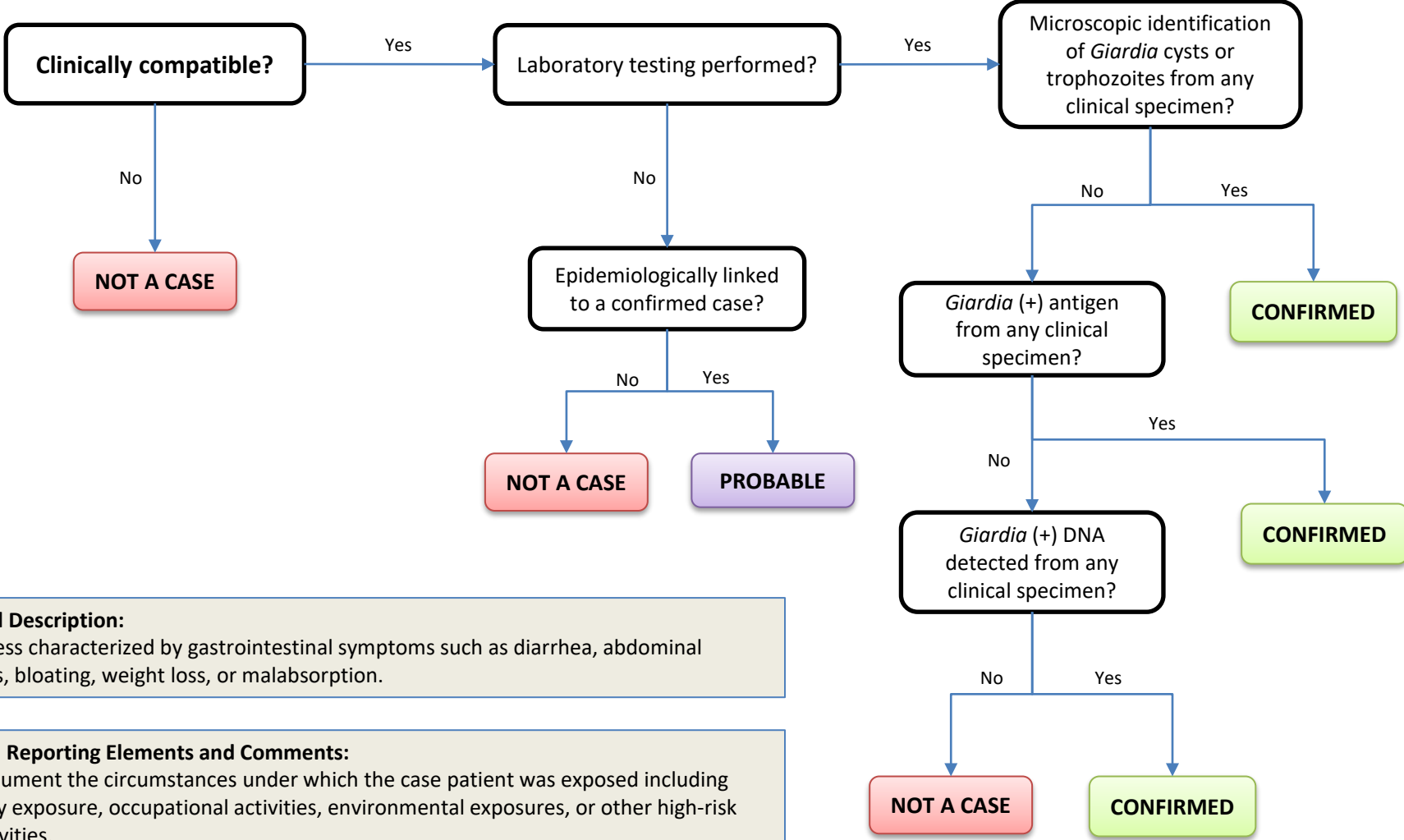


Giardiasis



Clinical Description:
 An illness characterized by gastrointestinal symptoms such as diarrhea, abdominal cramps, bloating, weight loss, or malabsorption.

- Critical Reporting Elements and Comments:**
- Document the circumstances under which the case patient was exposed including duty exposure, occupational activities, environmental exposures, or other high-risk activities.
 - Document if case patient works in, lives in, or attends a high transmission setting such as food handling, daycare, school, group living, health care, training center, or ship.