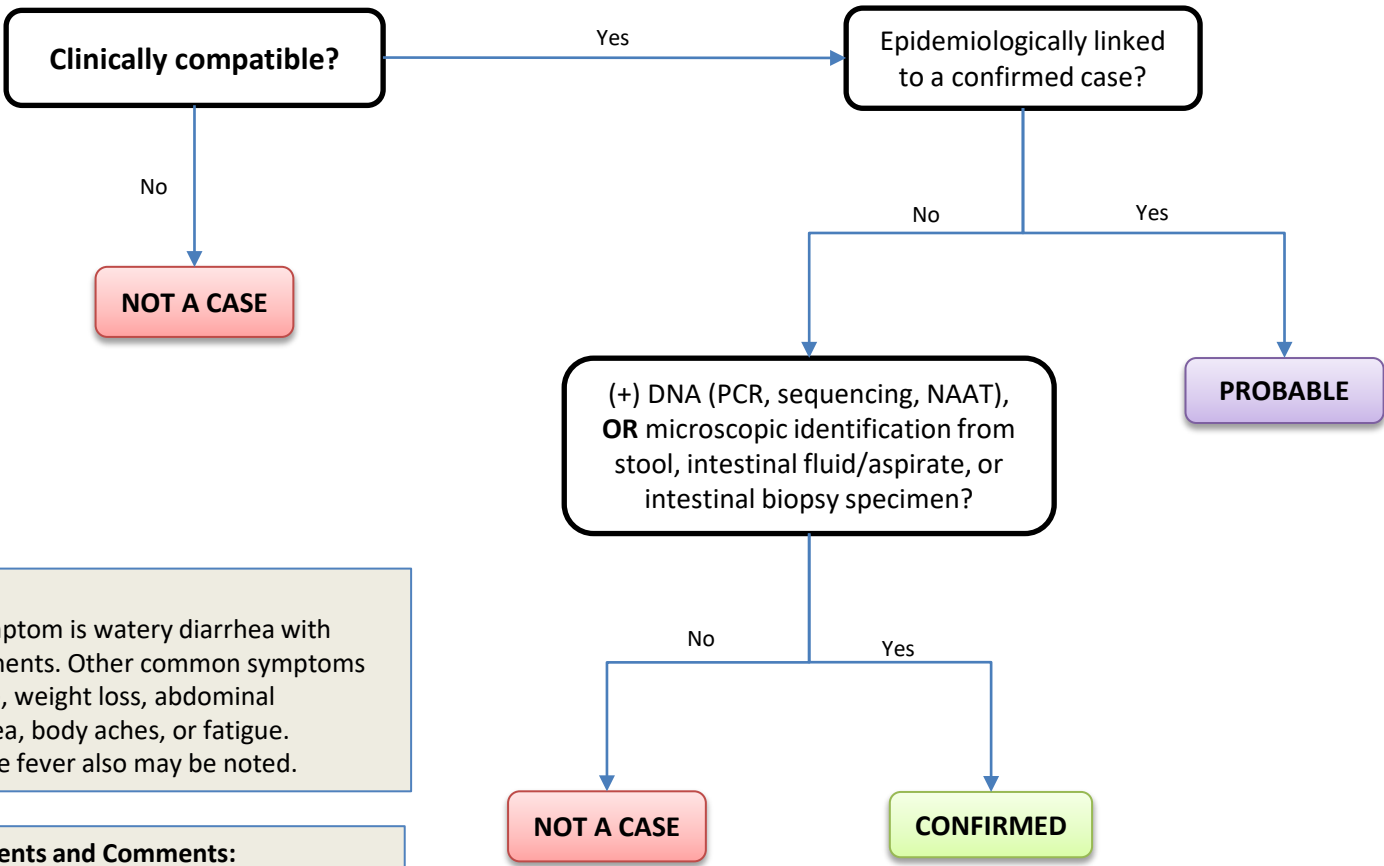


Cyclosporiasis



Clinical Description:
The most common symptom is watery diarrhea with frequent bowel movements. Other common symptoms include loss of appetite, weight loss, abdominal cramps/bloating, nausea, body aches, or fatigue. Vomiting and low-grade fever also may be noted.

- Critical Reporting Elements and Comments:**
- Document species and source of infection, if known.
 - Document if the case lives in, works in, or attends a high transmission setting such as food handling, daycare, school, group living, health care, training center, or ship.