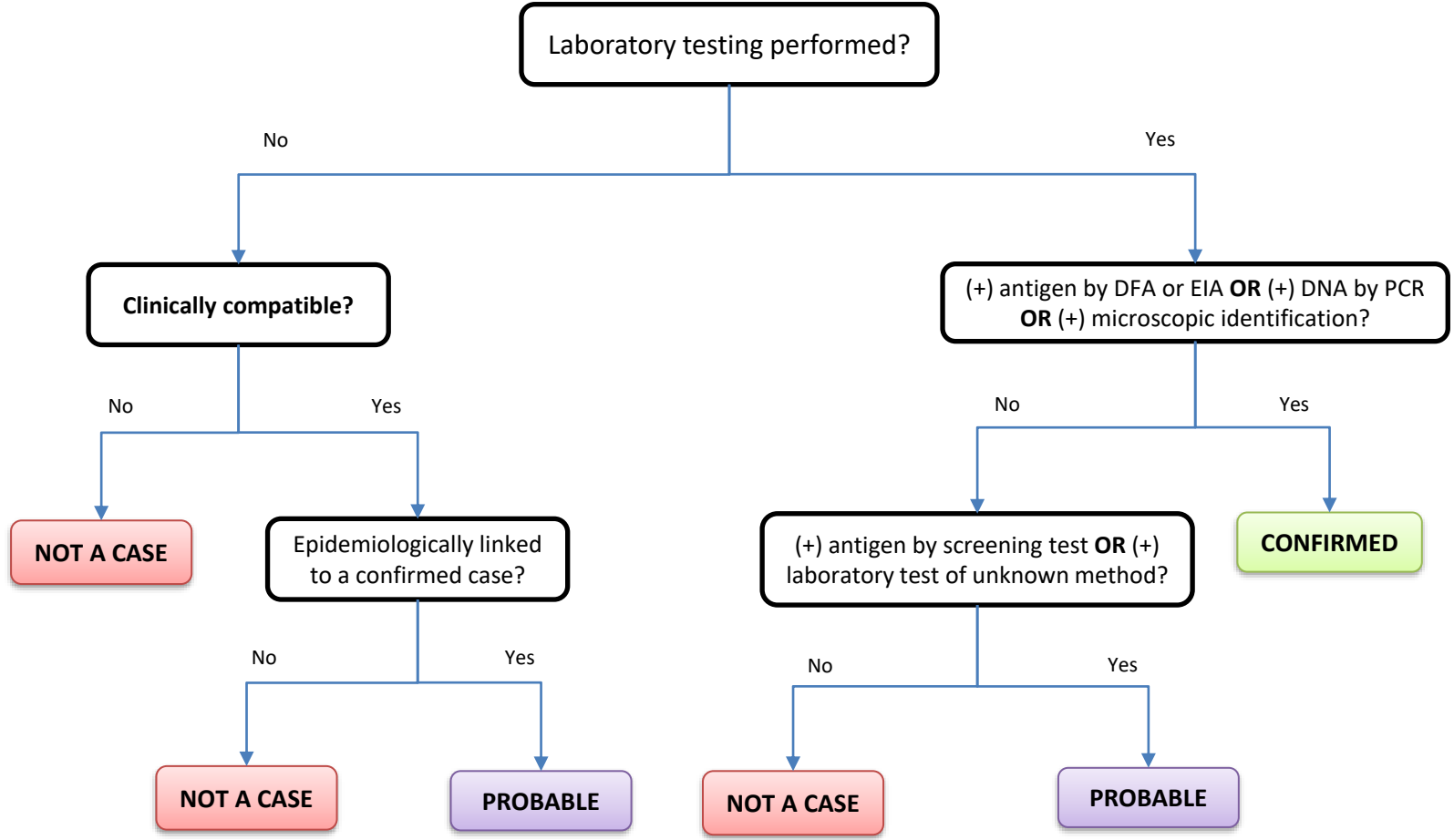


Cryptosporidiosis



Clinical Description:
 An illness characterized by diarrhea and any of the following: duration of diarrhea of 72 hours or more, abdominal cramping, vomiting, or anorexia.

- Critical Reporting Elements and Comments:**
- Document the source of infection, if known.
 - Document the circumstances under which the case patient was exposed including duty exposure, occupational activities, environmental exposures, or other high-risk activities.
 - Document if the case lives in, works in, or attends a high-transmission setting such as food handling, daycare, school, group living, health care, training center, or ship.