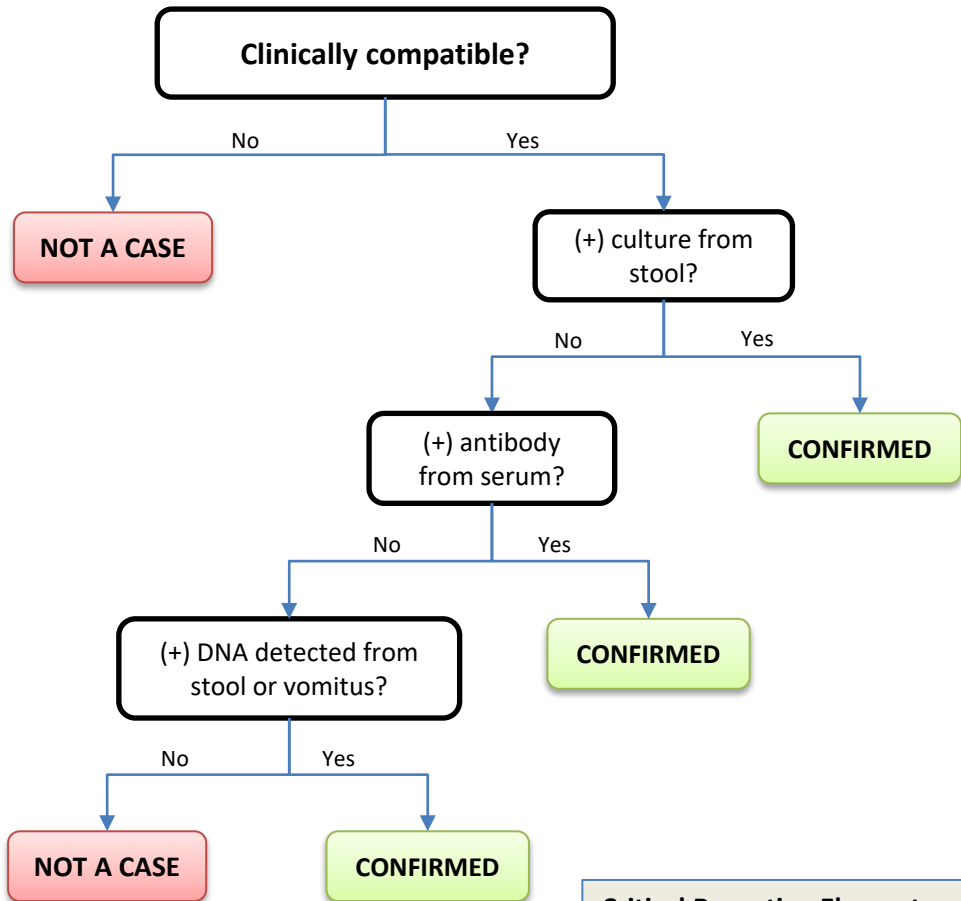


# Cholera



**Clinical Description:**  
 An acute illness characterized by profuse watery diarrhea and vomiting. Severity is variable; however, severe cases can result in rapid dehydration, electrolyte disturbances, or death.

**Critical Reporting Elements and Comments:**

- Specify the serogroup (*V. cholerae* O1 or *V. cholerae* O139) if known.
- Document relevant travel and deployment history occurring within the incubation period (0–5 days).

**NOTE:** Not all *V. cholerae* O1 or O139 is reportable. Only *V. cholerae* O1 or O139 that produces cholera toxin is reportable.