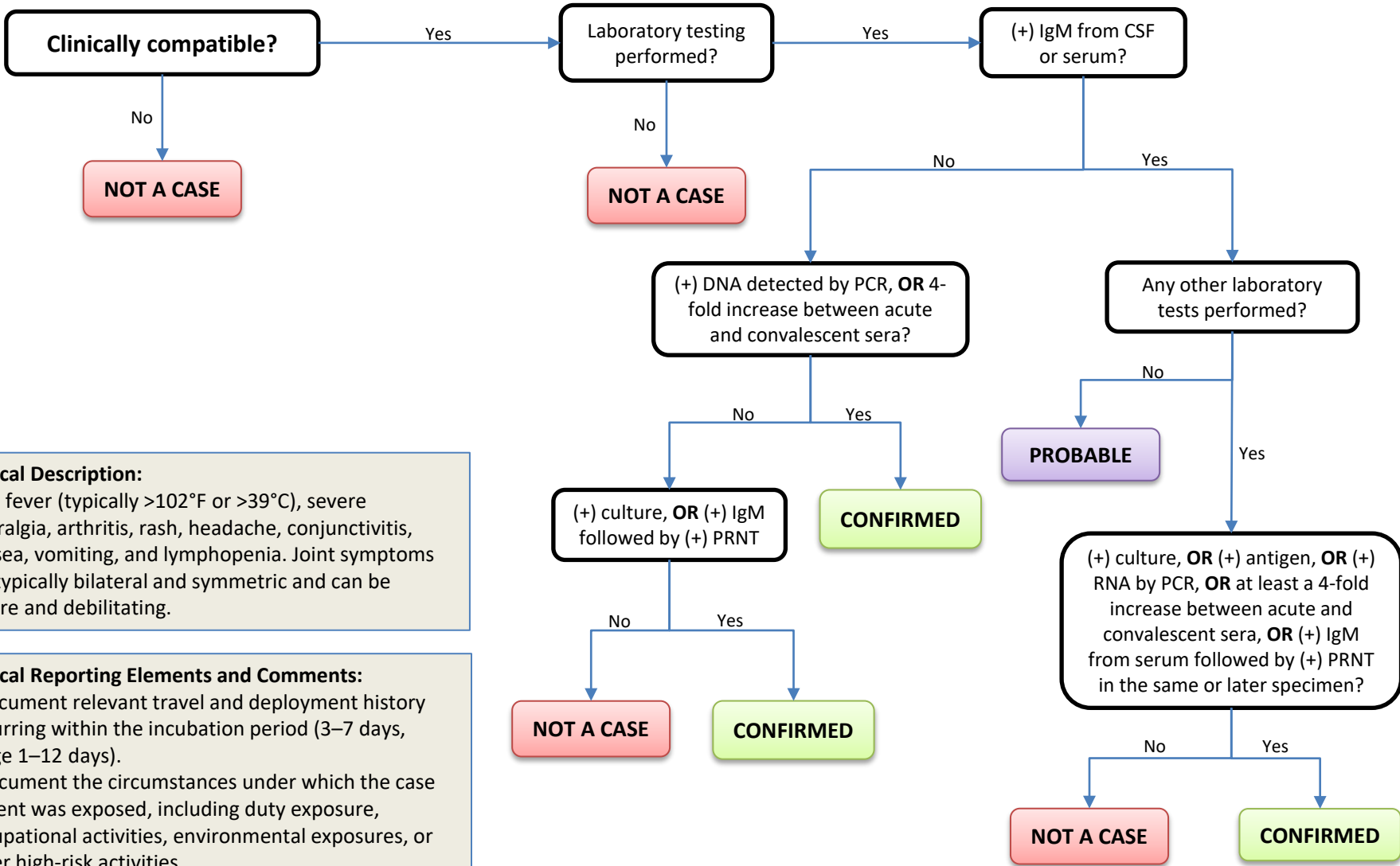


Chikungunya Virus Disease



Clinical Description:
 High fever (typically >102°F or >39°C), severe arthralgia, arthritis, rash, headache, conjunctivitis, nausea, vomiting, and lymphopenia. Joint symptoms are typically bilateral and symmetric and can be severe and debilitating.

Critical Reporting Elements and Comments:
 - Document relevant travel and deployment history occurring within the incubation period (3–7 days, range 1–12 days).
 - Document the circumstances under which the case patient was exposed, including duty exposure, occupational activities, environmental exposures, or other high-risk activities.