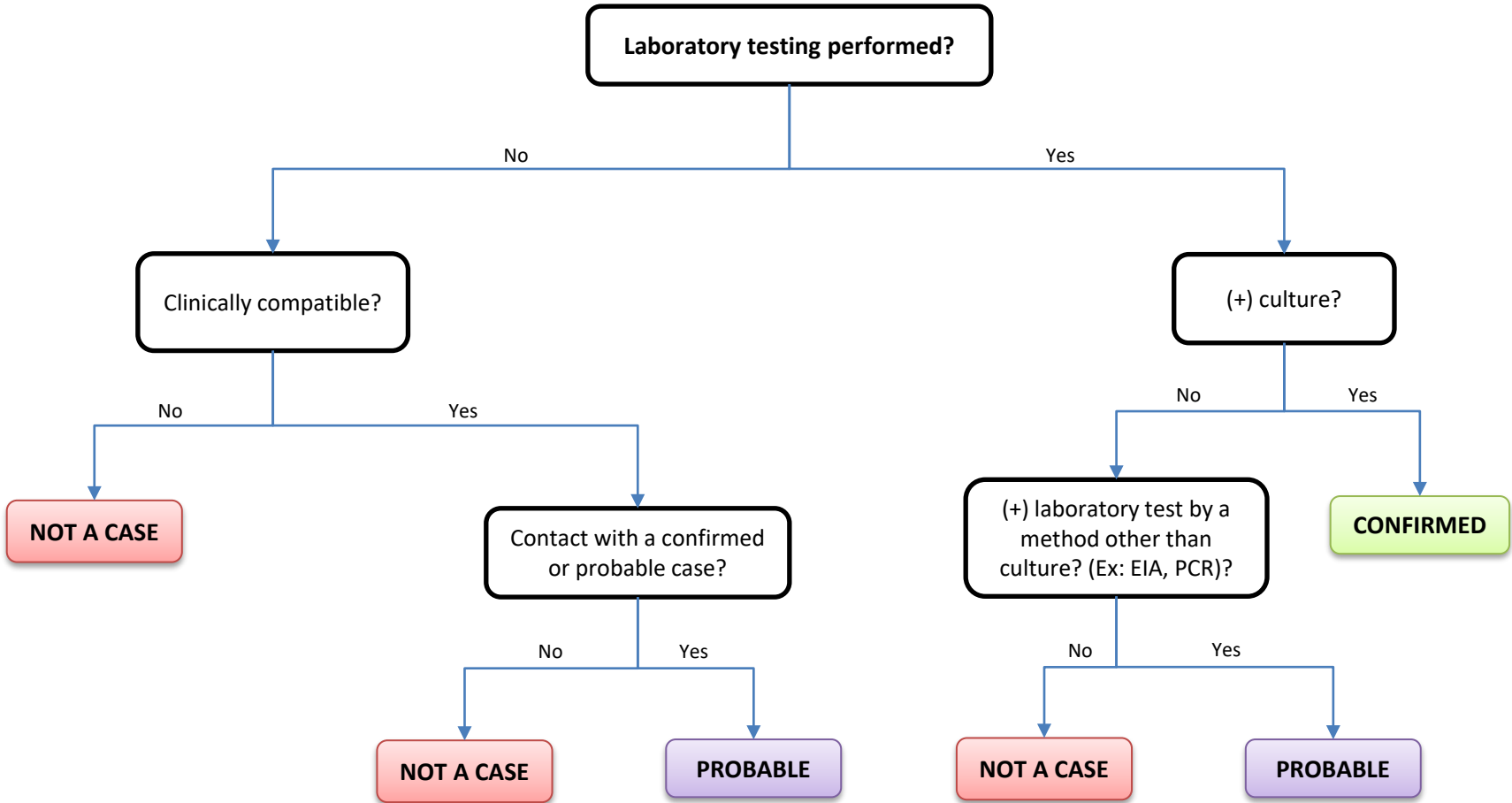


# Campylobacteriosis



**Clinical Description:**  
 Acute enteric disease with diarrhea, abdominal pain, nausea, and sometimes vomiting. Severe symptoms and invasive infections occur rarely, causing bacteremia, meningitis, or other focal infections.

- Critical Reporting Elements and Comments:**
- Document species and source of infection, if known.
  - Document relevant travel and deployment history occurring within the incubation period (2–5 days, range 1–10 days).
  - Document circumstances for exposure (e.g., duty exposure, occupational activities, environmental exposures, other high-risk activities).
  - Document if the case lives in, works in, or attends a high transmission setting.