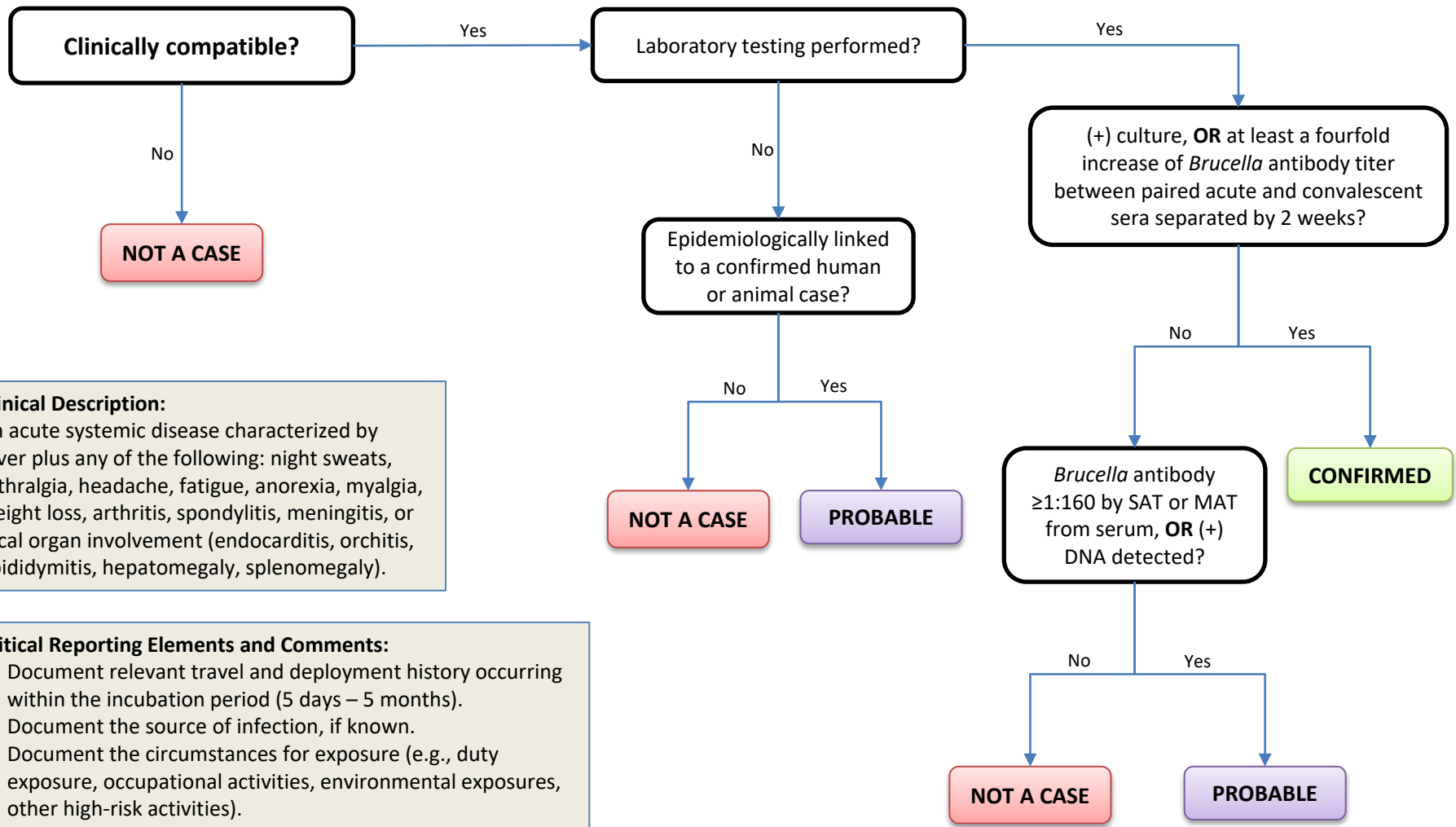


Brucellosis



Clinical Description:
 An acute systemic disease characterized by fever plus any of the following: night sweats, arthralgia, headache, fatigue, anorexia, myalgia, weight loss, arthritis, spondylitis, meningitis, or focal organ involvement (endocarditis, orchitis, epididymitis, hepatomegaly, splenomegaly).

Critical Reporting Elements and Comments:

- Document relevant travel and deployment history occurring within the incubation period (5 days – 5 months).
- Document the source of infection, if known.
- Document the circumstances for exposure (e.g., duty exposure, occupational activities, environmental exposures, other high-risk activities).

NOTE: A positive *Brucella* slide agglutination test (SAT) is the same as the Microagglutination Test (MAT); it therefore meets the probable case definition and should be reported.