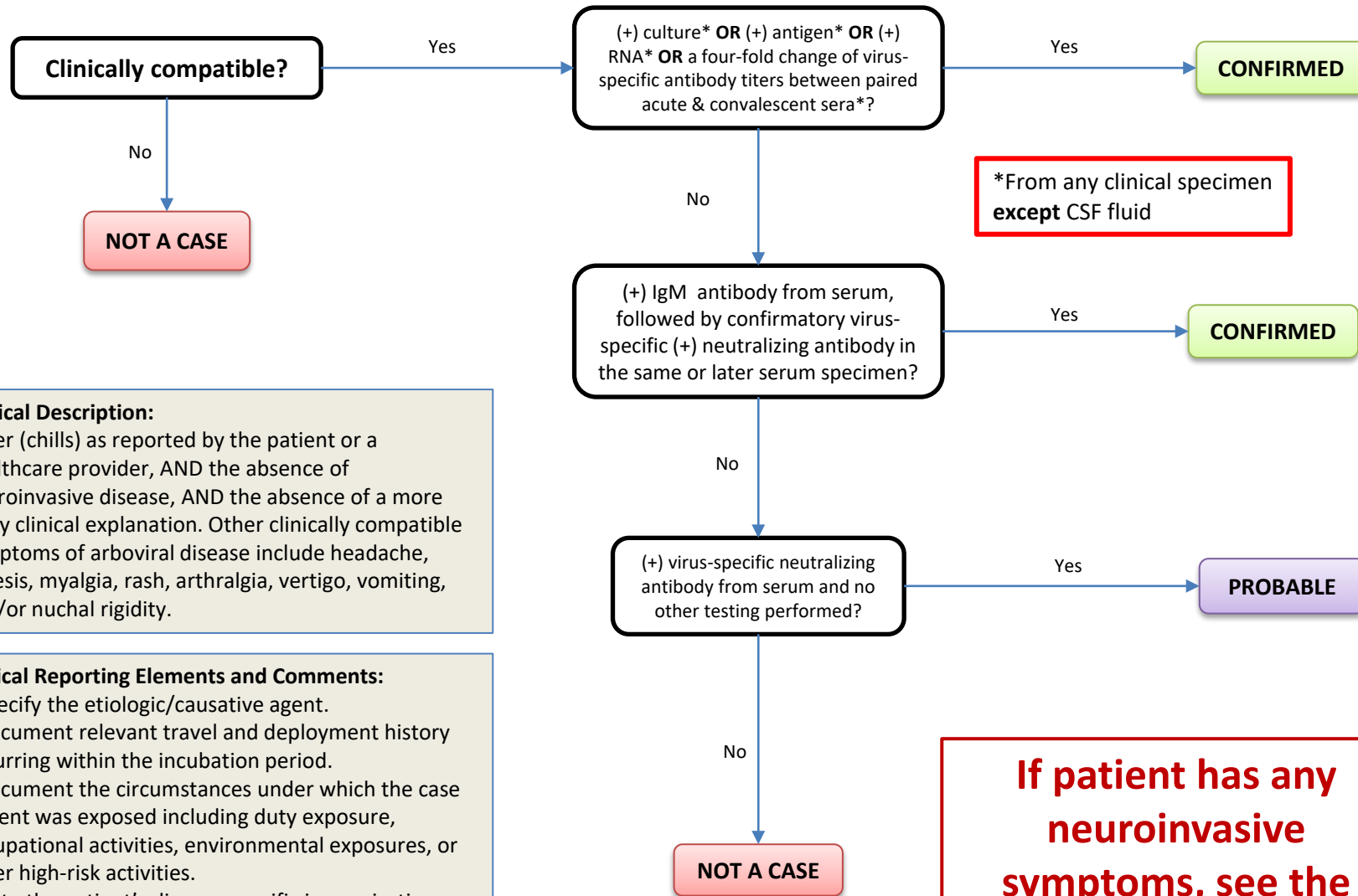


Arboviral Disease: Non-Neuroinvasive

INCLUDES: West Nile fever, West Nile encephalitis, Japanese encephalitis, Western Equine encephalitis, and other mosquito-borne viruses (western equine encephalitis, eastern equine encephalitis, St. Louis encephalitis, California virus encephalitis) and tick-borne viruses (Powassan virus, tick-borne encephalitis, Colorado tick fever) and others.

EXCLUDES: chikungunya virus, dengue virus, Lyme disease, relapsing fever, Rift Valley fever, spotted fever rickettsiosis, yellow fever virus, and Zika virus. See respective case definitions.



Clinical Description:
 Fever (chills) as reported by the patient or a healthcare provider, AND the absence of neuroinvasive disease, AND the absence of a more likely clinical explanation. Other clinically compatible symptoms of arboviral disease include headache, paresis, myalgia, rash, arthralgia, vertigo, vomiting, and/or nuchal rigidity.

Critical Reporting Elements and Comments:

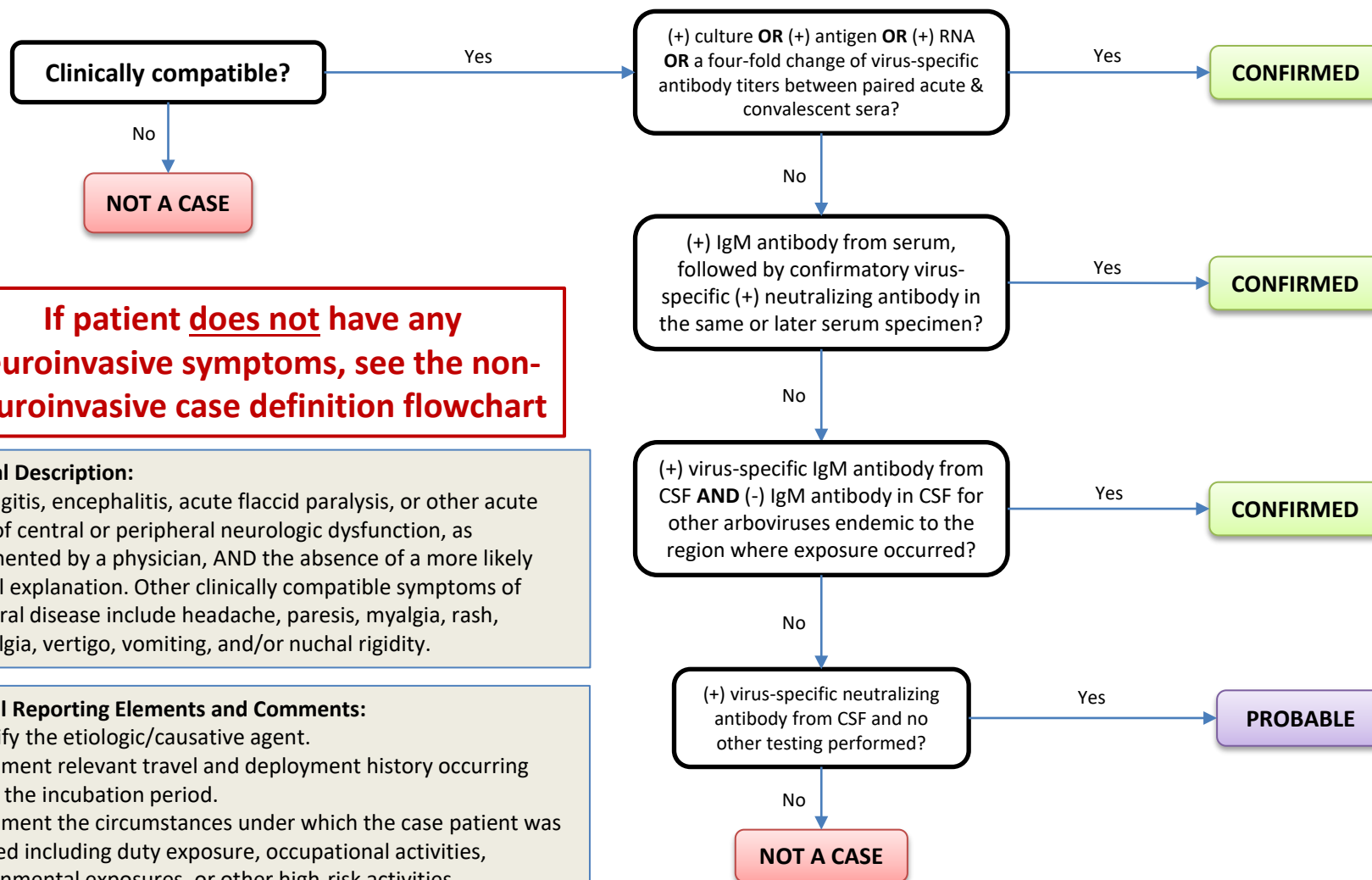
- Specify the etiologic/causative agent.
- Document relevant travel and deployment history occurring within the incubation period.
- Document the circumstances under which the case patient was exposed including duty exposure, occupational activities, environmental exposures, or other high-risk activities.
- Note the patient’s disease specific immunization history.

If patient has any neuroinvasive symptoms, see the neuroinvasive case definition flowchart!

Arboviral Disease: Neuroinvasive

INCLUDES: West Nile fever, West Nile encephalitis, Japanese encephalitis, Western Equine encephalitis, and other mosquito-borne viruses (western equine encephalitis, eastern equine encephalitis, St. Louis encephalitis, California virus encephalitis) and tick-borne viruses (Powassan virus, tick-borne encephalitis, Colorado tick fever) and others.

EXCLUDES: chikungunya virus, dengue virus, Lyme disease, relapsing fever, Rift Valley fever, spotted fever rickettsiosis, yellow fever virus, and Zika virus. See respective case definitions.



If patient does not have any neuroinvasive symptoms, see the non-neuroinvasive case definition flowchart

Clinical Description:
Meningitis, encephalitis, acute flaccid paralysis, or other acute signs of central or peripheral neurologic dysfunction, as documented by a physician, AND the absence of a more likely clinical explanation. Other clinically compatible symptoms of arboviral disease include headache, paresis, myalgia, rash, arthralgia, vertigo, vomiting, and/or nuchal rigidity.

Critical Reporting Elements and Comments:

- Specify the etiologic/causative agent.
- Document relevant travel and deployment history occurring within the incubation period.
- Document the circumstances under which the case patient was exposed including duty exposure, occupational activities, environmental exposures, or other high-risk activities.
- Note the patient's disease specific immunization history.