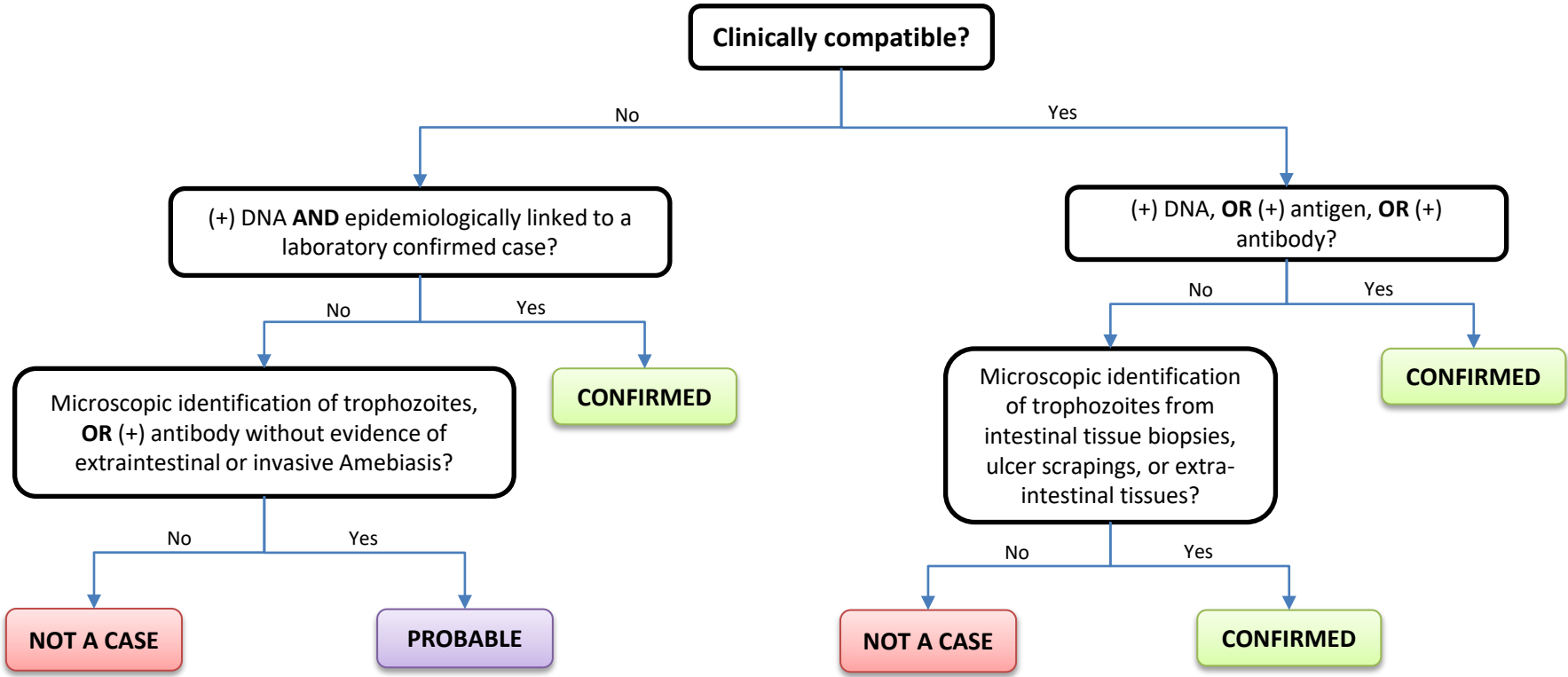


# Amebiasis



**Clinical Description:**

An illness caused by infection of the large intestine that is characterized by symptoms ranging from mild, chronic diarrhea to severe and sudden onset diarrhea containing mucus, blood, or both. Extraintestinal or invasive infections can also occur and may present as an acute abscess in the liver, lung, brain, or other organs. A granulomatous lesion in the intestine may be discovered on rare occasion.

**Critical Reporting Elements and Comments:**

- Document the anatomical site of infection (intestines, liver, lung, brain, etc.).
- Document relevant travel and deployment history occurring within the incubation period (incubation period can vary from a few days to several months or years; commonly 2–4 weeks).
- Microscopic test from stool reported as positive for *Entamoeba histolytica* and *Entamoeba dispar* should only be reported as probable if trophozoites with ingested red blood cells are seen.