

U.S. Army Public Health Center

# Army Influenza Activity Report

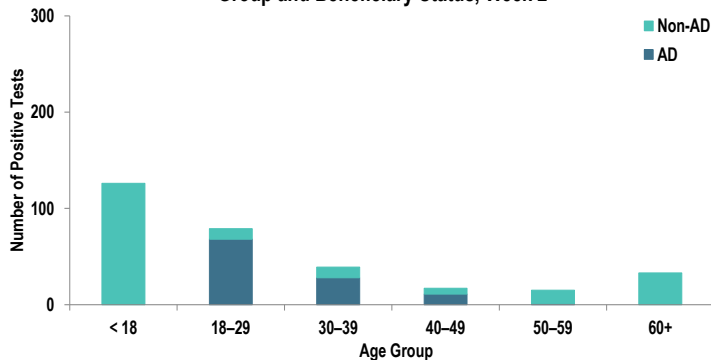
Week ending 14 January 2023 (Week 2)

## SUMMARY

Influenza-like illness activity among Army beneficiaries is still decreasing. One hundred and fifty-seven positive influenza A and twenty-six influenza B specimens were reported during surveillance Week 2. Additionally, 4 influenza-associated hospitalizations were reported in Week 2; the season total thus far is 150 hospitalizations compared to an average of 68 influenza-associated hospitalizations during the same time period during 2017–2020. Nationwide, influenza activity continues to decline, with 4.6% of specimens tested by clinical laboratories being positive for influenza A or B, according to the Centers for Disease Control and Prevention (CDC).

## DEMOGRAPHICS

Positive Respiratory Specimen Results from Army MTFs by Age Group and Beneficiary Status, Week 2



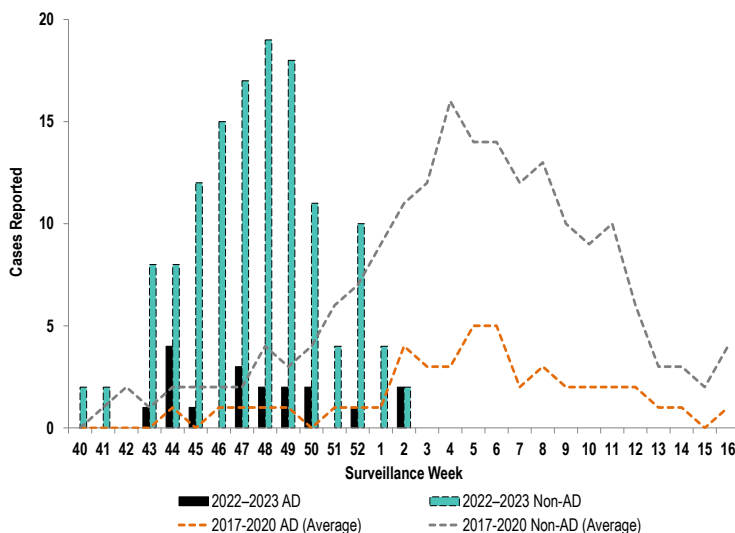
**AD:** One hundred and eight positive respiratory specimens were collected from AD Service members (SMs) during Week 2; 63.0% (n=68) of the positive specimens were collected from SMs 18 – 29 years of age.

**Non-AD:** Two hundred and one positive respiratory specimens were collected from non-AD individuals during Week 2; 62.7% (n=126) of the positive specimens were collected from individuals under 18 years of age.

*The age and beneficiary status of some cases were not available. Therefore, all calculations involving these variables were conducted using only available data. Differences in total results, and age- and beneficiary status-specific results may be noted throughout the report.*

## INFLUENZA-ASSOCIATED HOSPITALIZATIONS

Army Influenza-Associated Hospitalizations Reported in DRSi by Onset Week



Four influenza-associated hospitalizations among two AD service members and two non-AD individuals with an onset date in Week 2 were reported to the Disease Reporting System internet (DRSi). The season total thus far is 150 hospitalizations. The Week 2 average during the 2017–2020 seasons was 15 hospitalizations (with an average of 72 hospitalizations reported from the start of the season through Week 2).

*The DRSi does not capture cases older than 65 years old for influenza-associated hospitalizations.*

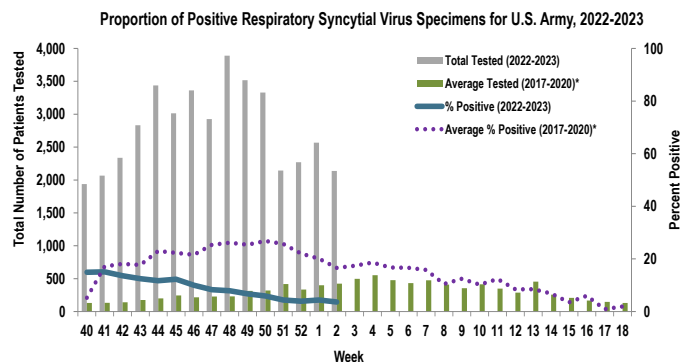
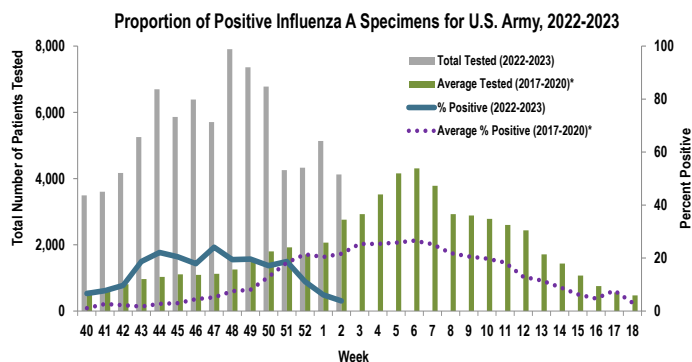
Data are preliminary and subject to change.

Disclaimer: The mention of any non-federal entity and/or its products is for informational purposes only, and not to be construed or interpreted, in any manner, as federal endorsement of that non-federal entity or its products.

Questions?  
[Email APHC DEP](mailto:APHC.DEP@army.mil)

## INFLUENZA A ACTIVITY - ARMY

## RSV ACTIVITY - ARMY



Of the 4,124 specimens tested for influenza A during Week 2, 3.8% (n=157) were positive. This is a decrease of approximately two percentage points from Week 1 (6.1%).

Of the 2,137 specimens tested for RSV during Week 2, 3.6% (n=78) were positive. This is a decrease of approximately one percentage point from Week 1 (4.4%).

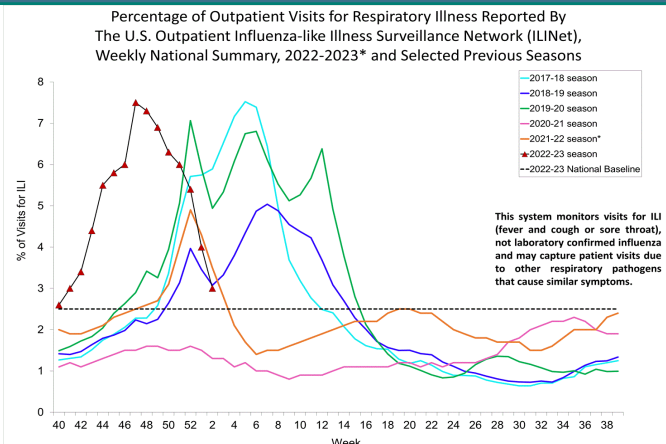
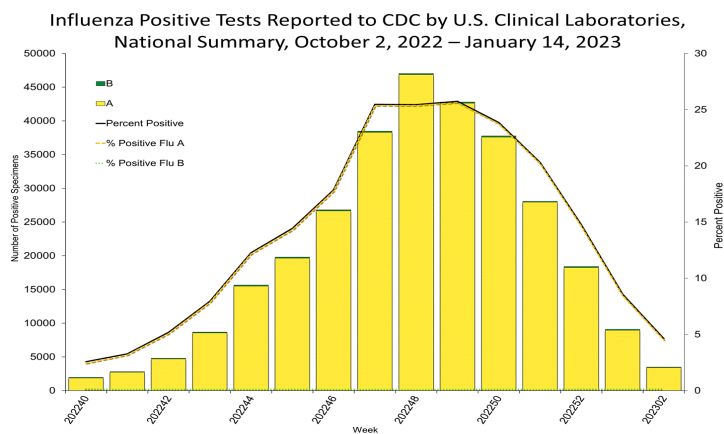
Data from the 2020–2021 and 2021–2022 influenza seasons are not included in comparison calculations due to the unusually low incidence of influenza.

		Week 51	Week 52	Week 1	Week 2	Season Total
Army MTF Laboratory Results, 2022-23	Adenovirus	15	18	22	15	270
	Enterovirus	22	23	15	20	328
	Influenza A	795	479	311	157	12,971
	Influenza B	18	18	43	26	502
	Parainfluenza	11	25	14	13	409
	RSV	94	88	113	78	3,737
	Negative	3,355	3,746	4,684	3,880	63,726
	<b>Total</b>	<b>4,310</b>	<b>4,397</b>	<b>5,202</b>	<b>4,189</b>	<b>81,943</b>

Of the 4,189 specimens tested during Week 2, 7.4% (n=309) were positive for any type of respiratory illness. Influenza A accounted for 50.8% (n=157), RSV accounted for 25.2% (n=78), influenza B accounted for 8.4% (n=26), enterovirus accounted for 6.5% (n=20), adenovirus accounted for 4.9% (n=15), and parainfluenza accounted for 4.2% (n=13). Additionally, the reported number of specimens tested decreased by 19.5% from Week 1 to Week 2.

Significantly more tests for influenza have been conducted this season compared to past seasons; 81,943 specimens have been tested for influenza A so far this season compared to the average of 20,494 specimens during the same time period in 2017-2020.

## INFLUENZA-LIKE ILLNESS (ILI) ACTIVITY - UNITED STATES

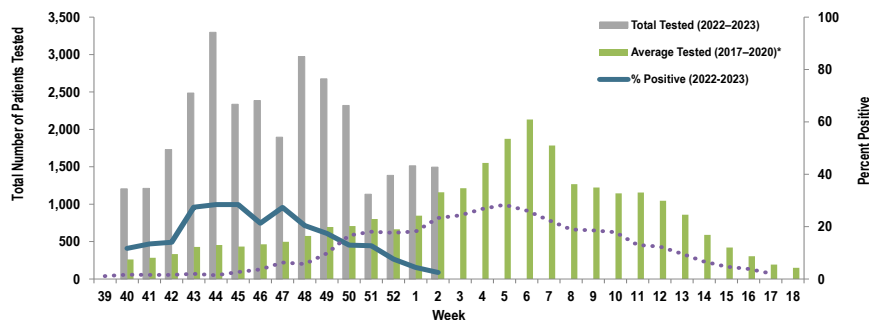


Nationwide in Week 2, incident ILI activity was 3.0%; this is above the national baseline of 2.5%. Additionally, a total of 75,638 specimens were tested for influenza by select clinical laboratories and submitted to the CDC; 3,498 (4.6%) were positive. Influenza A accounted for 97.3% (n=3,403) of the total positive specimens.

**Locations providing Week 2 laboratory data as of 18 January 2023:** Carlisle Barracks, Ft. Belvoir, Ft. Benning, Ft. Bliss, Ft. Bragg, Camp Zama, Ft. Carson, Ft. Drum, Ft. Gordon, Ft. Hood, Ft. Huachuca, Ft. Irwin, Ft. Jackson, Ft. Knox, Ft. Leavenworth, Ft. Lee, Ft. Lewis, Ft. Meade, Ft. Polk, Ft. Riley, Ft. Rucker, Ft. Sam Houston, Ft. Sill, Ft. Stewart, Ft. Wainwright, Landstuhl Regional Medical Center, Redstone Arsenal, Tripler Army Medical Center, the U.S. Military Academy, and Walter Reed National Military Medical Center.

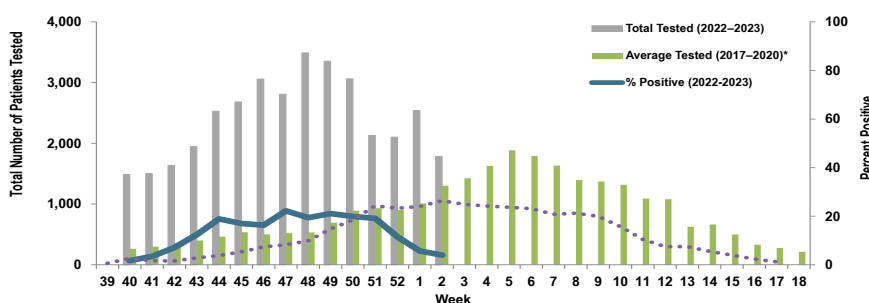
## Proportion of Influenza A Positive Specimens by Week and Region, Army Medical Laboratories, 2022–2023 as Compared to 2017–2020\*

### Regional Health Command - Atlantic (RHC-A)



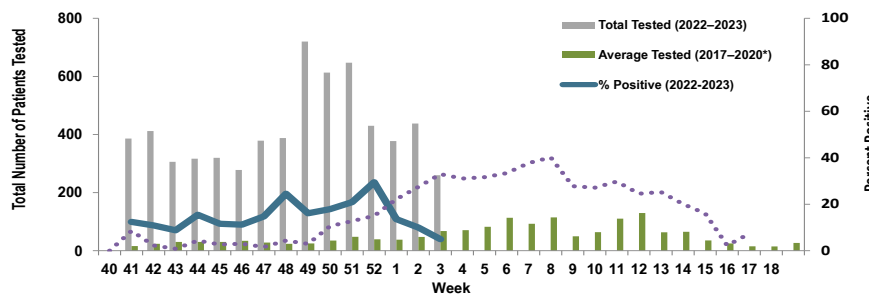
Week 2			
Age Group	AD	Non-AD	Season Total
< 18	0	11	2,853
18–29	7	1	1,189
30–39	6	2	707
40–49	1	1	343
50–59	0	5	219
60+	0	4	239
<b>Total</b>	<b>14</b>	<b>24</b>	<b>5,550</b>

### Regional Health Command - Central (RHC-C)



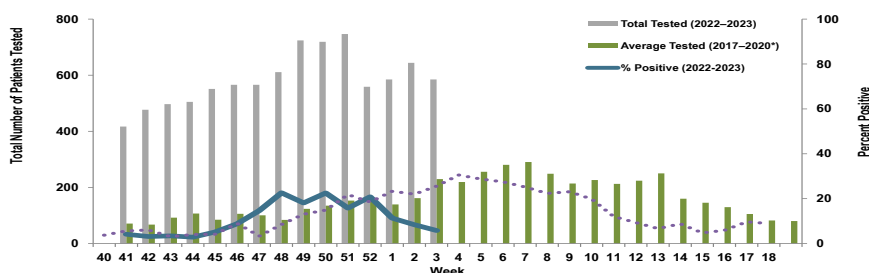
Week 2			
Age Group	AD	Non-AD	Season Total
< 18	0	25	2,682
18–29	20	4	1,154
30–39	8	4	656
40–49	2	2	330
50–59	0	3	194
60+	0	4	334
<b>Total</b>	<b>30</b>	<b>42</b>	<b>5,350</b>

### Regional Health Command - Europe (RHC-E)



Week 2			
Age Group	AD	Non-AD	Season Total
< 18	0	6	556
18–29	1	1	187
30–39	0	1	140
40–49	1	0	65
50–59	1	0	20
60+	0	2	22
<b>Total</b>	<b>3</b>	<b>10</b>	<b>990</b>

### Regional Health Command - Pacific (RHC-P)



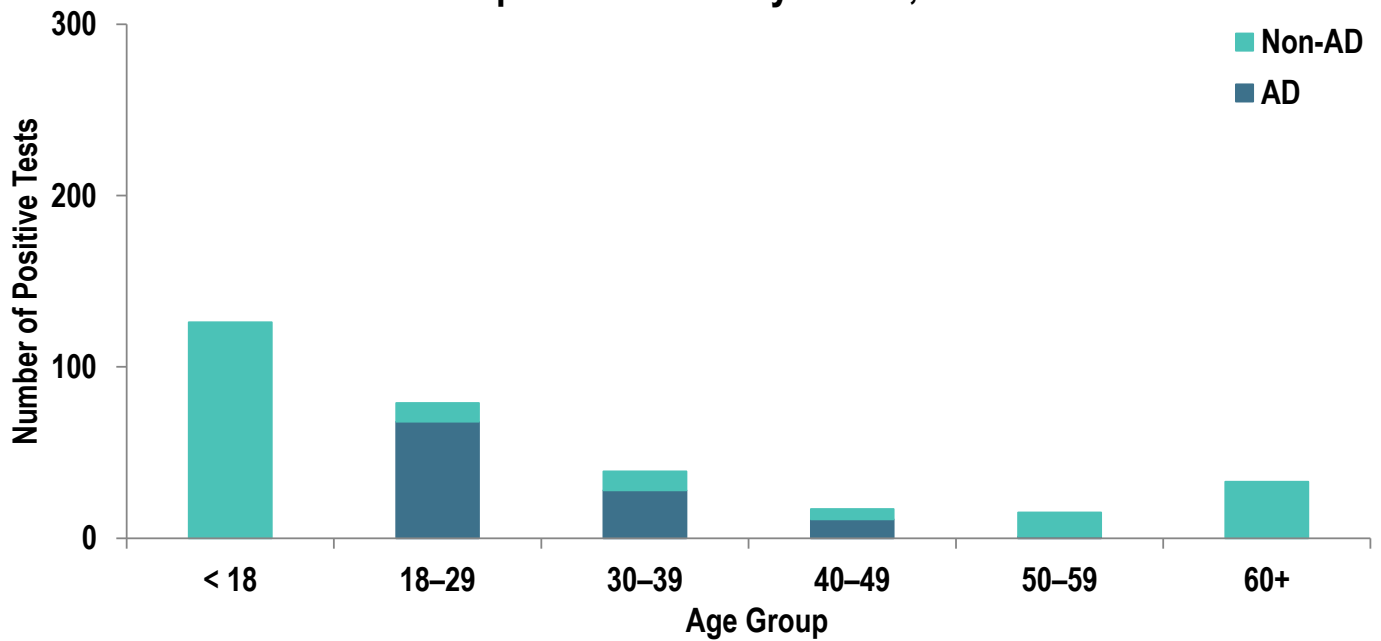
Week 2			
Age Group	AD	Non-AD	Season Total
< 18	0	14	435
18–29	7	0	250
30–39	4	0	169
40–49	2	2	71
50–59	0	1	37
60+	0	4	88
<b>Total</b>	<b>13</b>	<b>21</b>	<b>1,050</b>

\*2017–2018 influenza season - 2019–2020 influenza season. Data from the 2020–2021 and 2021–2022 influenza seasons are not included in comparison calculations due to the unusually low incidence of influenza.

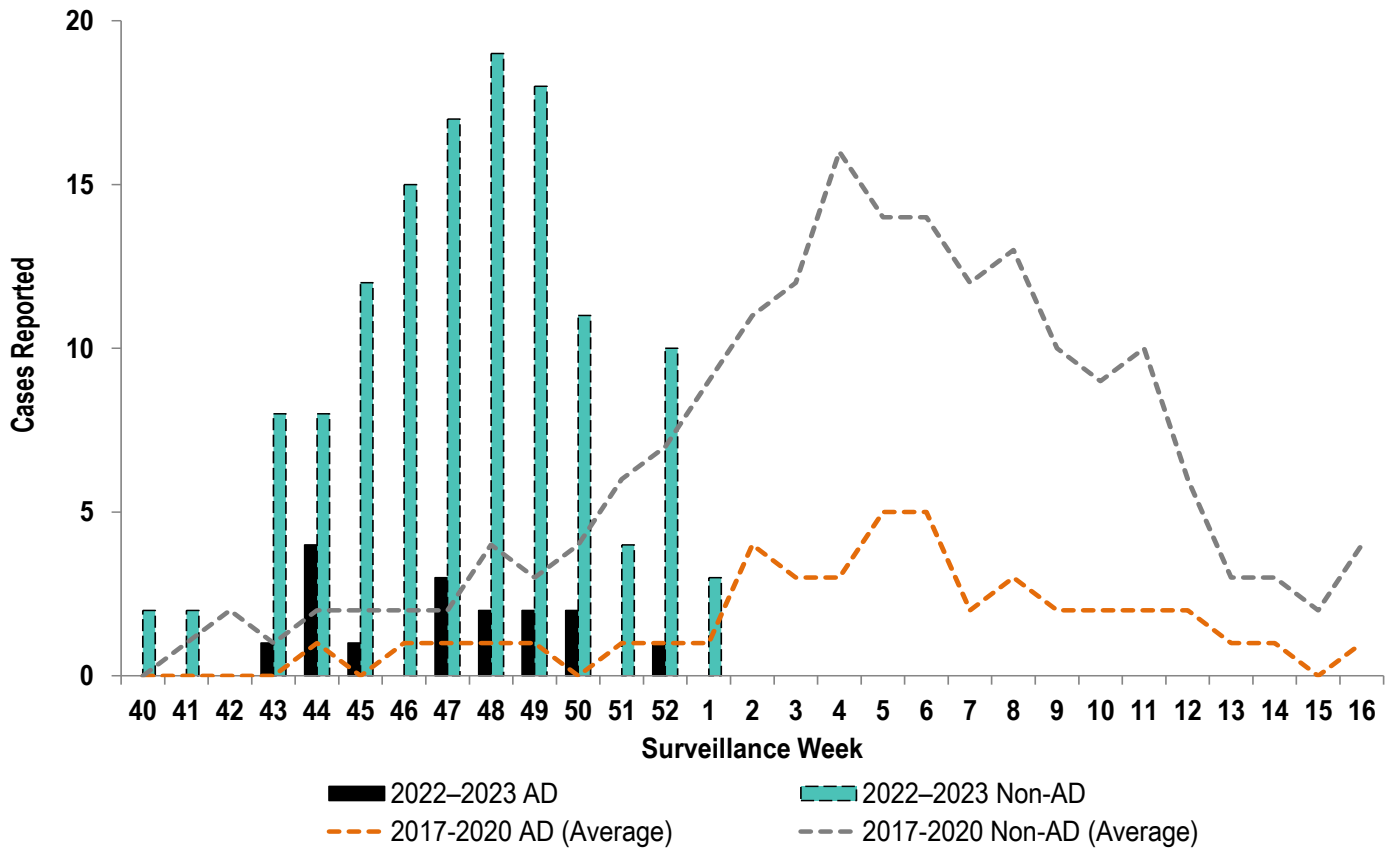
### Number of Positive Influenza A Specimens by Region and Duty Status

Region	Week 51		Week 52		Week 1		Week 2	
	AD	Non-AD	AD	Non-AD	AD	Non-AD	AD	Non-AD
RHC-A	35	109	32	73	30	37	14	24
RHC-C	70	338	49	193	51	95	30	42
RHC-E	37	90	18	39	20	24	3	10
RHC-P	36	80	19	56	23	31	13	21

**Positive Respiratory Specimen Results from Army MTFs by Age Group and Beneficiary Status, Week 2**



### Army Influenza-Associated Hospitalizations Reported in DRSi by Onset Week

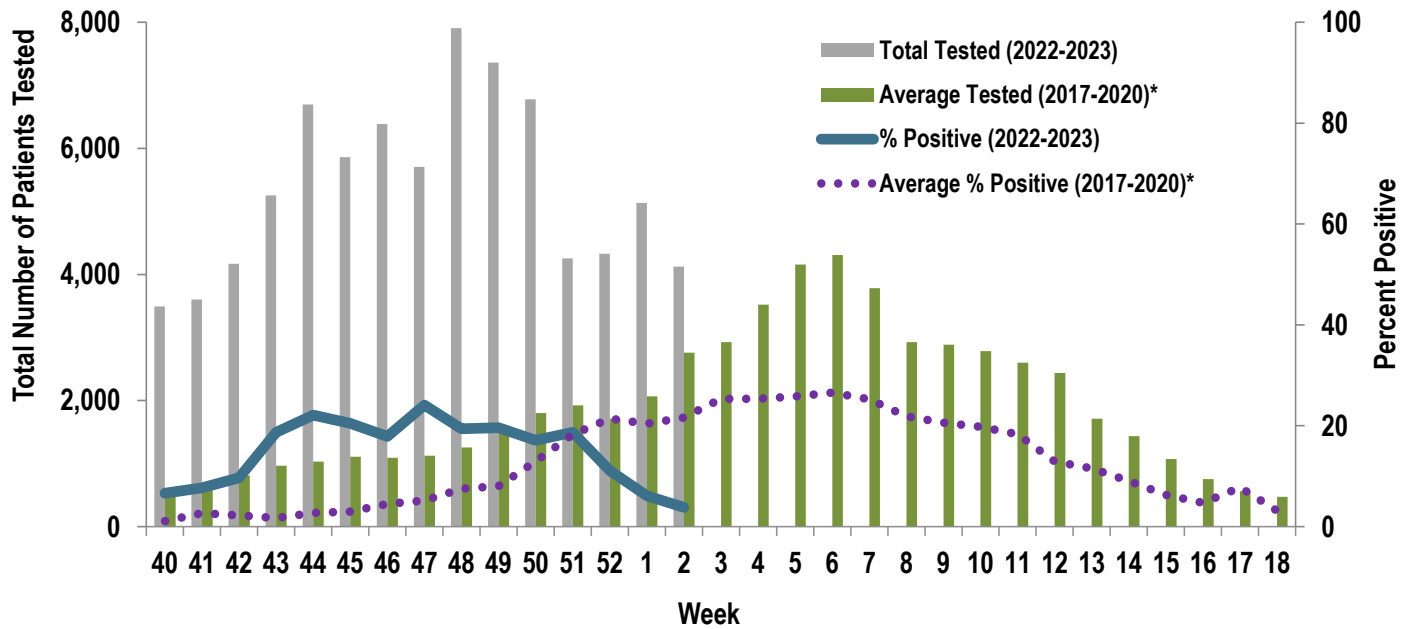


U.S. Army Public Health Center

# Army Influenza Activity Report

Week ending 14 January 2023 (Week 2)

Proportion of Positive Influenza A Specimens for U.S. Army, 2022-2023



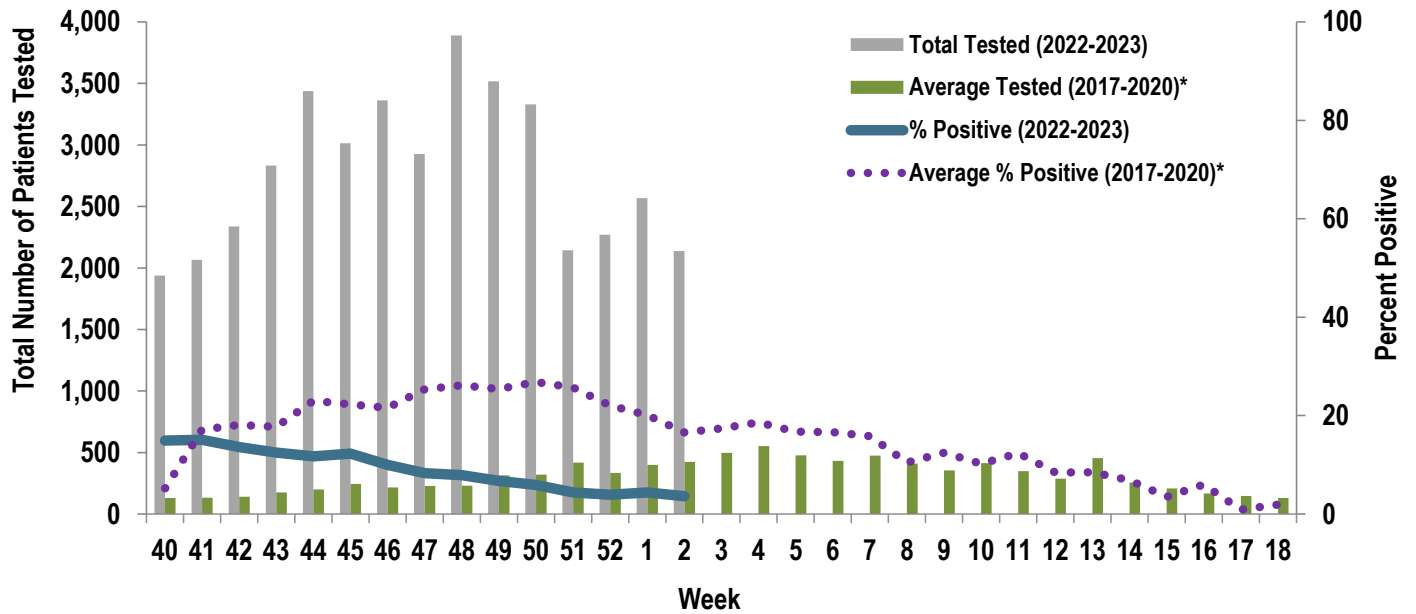
\*2017–2018 influenza season - 2019–2020 influenza season. Data from the 2020–2021 and 2021–2022 influenza seasons are not included in comparison calculations due to the unusually low incidence of influenza.

U.S. Army Public Health Center

# Army Influenza Activity Report

Week ending 14 January 2023 (Week 2)

Proportion of Positive Respiratory Syncytial Virus Specimens for U.S. Army, 2022-2023



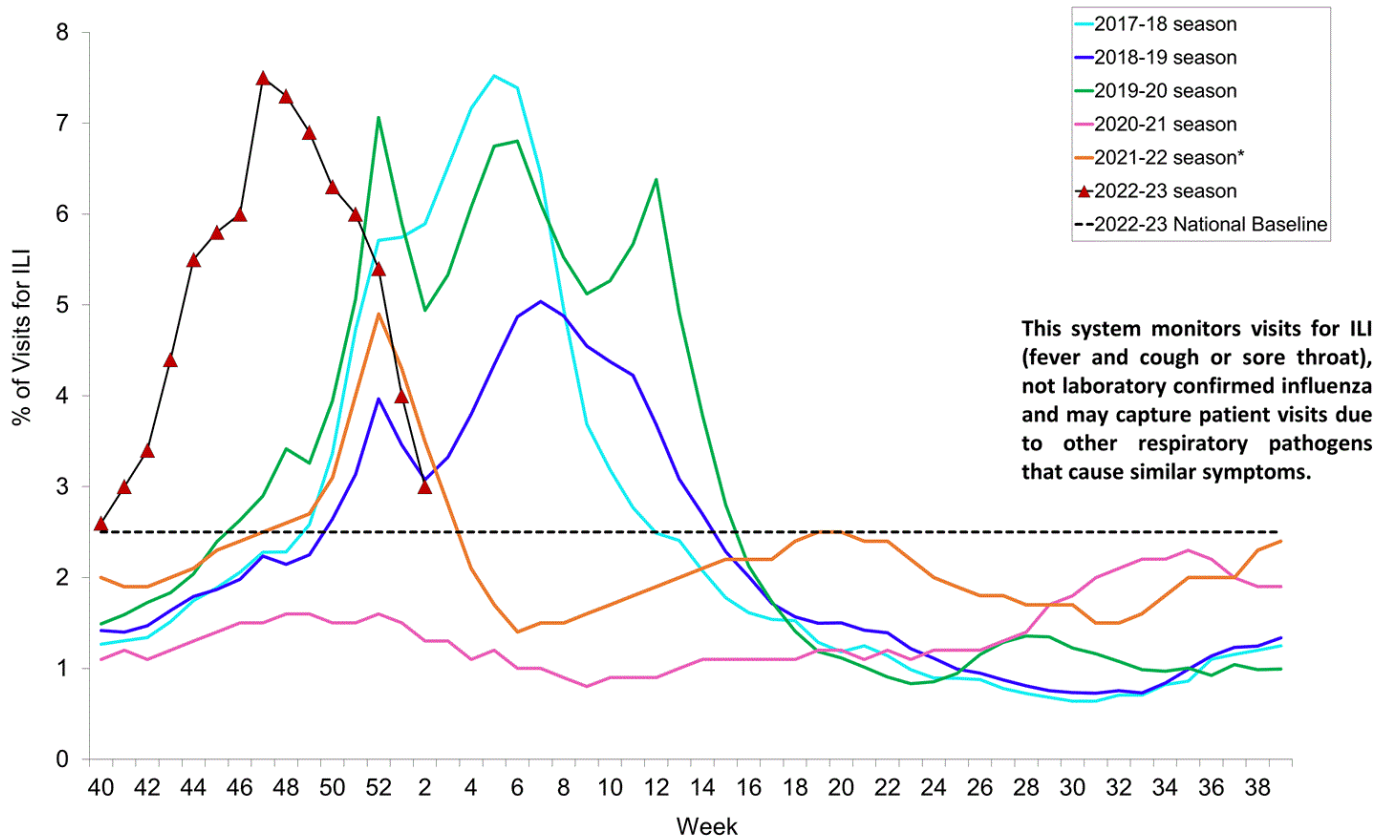
\*2017–2018 influenza season - 2019–2020 influenza season. Data from the 2020–2021 and 2021–2022 influenza seasons are not included in comparison calculations due to the unusually low incidence of influenza.

U.S. Army Public Health Center

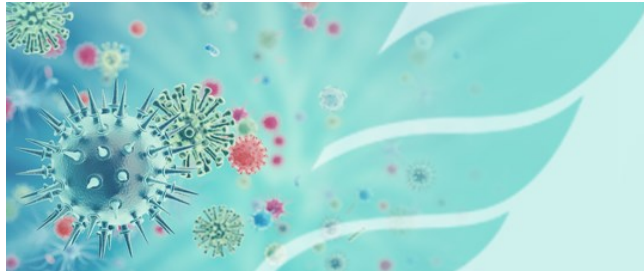
# Army Influenza Activity Report

Week ending 14 January 2023 (Week 2)

Percentage of Outpatient Visits for Respiratory Illness Reported By The U.S. Outpatient Influenza-like Illness Surveillance Network (ILINet), Weekly National Summary, 2022-2023\* and Selected Previous Seasons







# Army Influenza Activity Report

Week ending 14 January 2023 (Week 2)

### Influenza Positive Tests Reported to CDC by U.S. Clinical Laboratories, National Summary, October 2, 2022 – January 14, 2023

