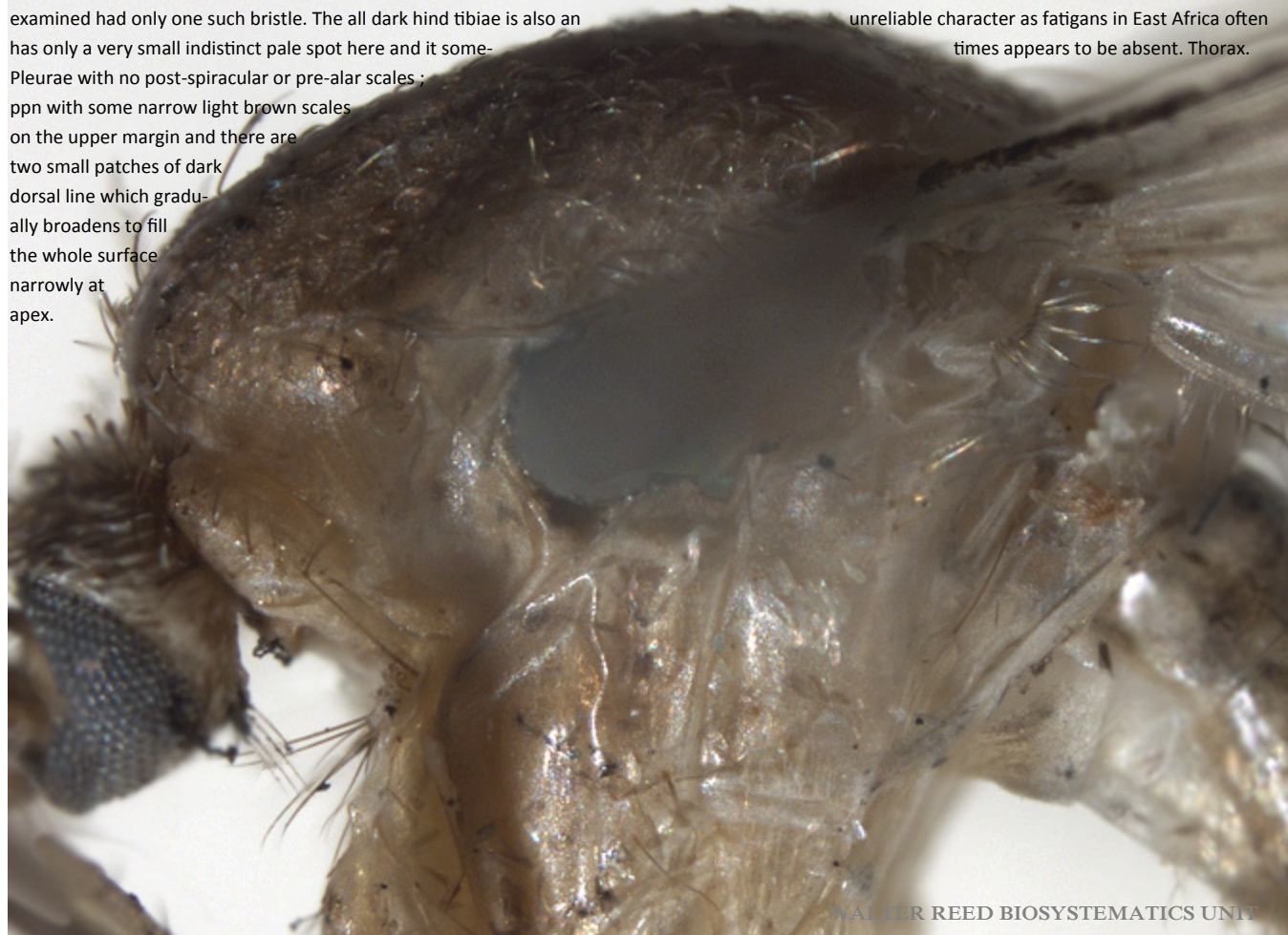


Culex (Culex) tenagius van Someren, WRBU specimen CXtng

Genus level - This mosquito is very similar to *C. lactivertus* Edwards type. It differs by having the proboscis pale below, all dark hind tibiae and longer and hairier male palps. In colouring and external structure it is very like *C. fatigans* Wiedemann and from this the only reliable difference is in the structure of the male terminalia. Although some specimens can be separated from *fatigans* by having 2 or more lower mesepimeral bristles, a number of specimens examined had only one such bristle. The all dark hind tibiae is also an unreliable character as *fatigans* in East Africa often times appears to be absent. Thorax.

Pleurae with no post-spiracular or pre-alar scales ;
 ppn with some narrow light brown scales
 on the upper margin and there are
 two small patches of dark
 dorsal line which gradu-
 ally broadens to fill
 the whole surface
 narrowly at
 apex.

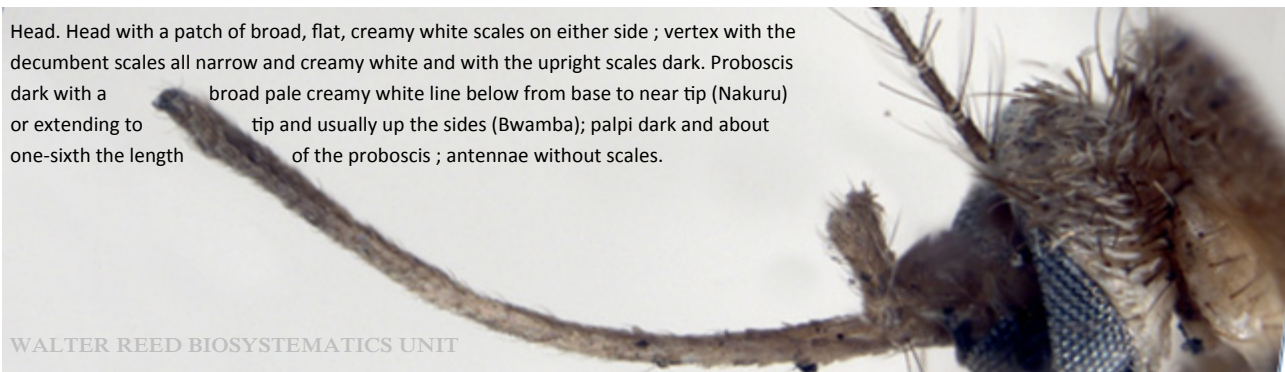


WALTER REED BIOSYSTEMATICS UNIT



WALTER REED BIOSYSTEMATICS UNIT

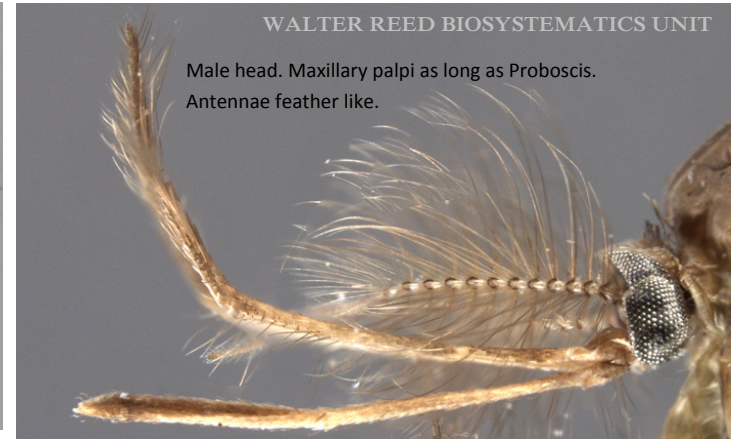
Head. Head with a patch of broad, flat, creamy white scales on either side ; vertex with the decumbent scales all narrow and creamy white and with the upright scales dark. Proboscis dark with a broad pale creamy white line below from base to near tip (Nakuru) or extending to tip and usually up the sides (Bwamba); palpi dark and about one-sixth the length of the proboscis ; antennae without scales.



WALTER REED BIOSYSTEMATICS UNIT



Culex (Culex) tenagius van Someren, WRBU specimen CXtng



Bionomics: Larva were taken from saline water near the hot springs at Mongiro.

Medical Importance: In Nakuru adults of this mosquito are often found in houses and labour lines where they are said to bite freely and a few mosquitoes caught while probing on a human arm were identified as *Cx. terzagius* sp.

