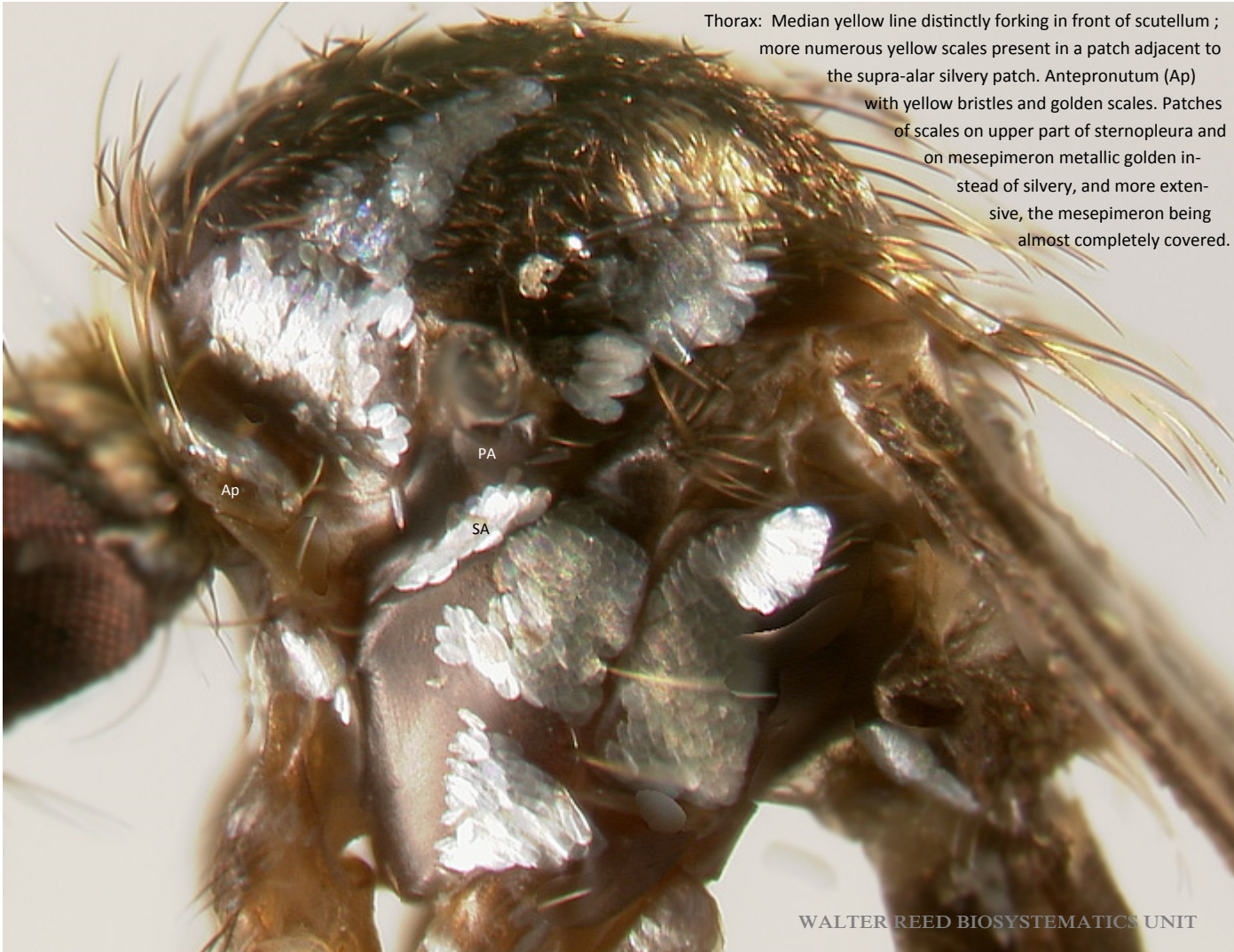
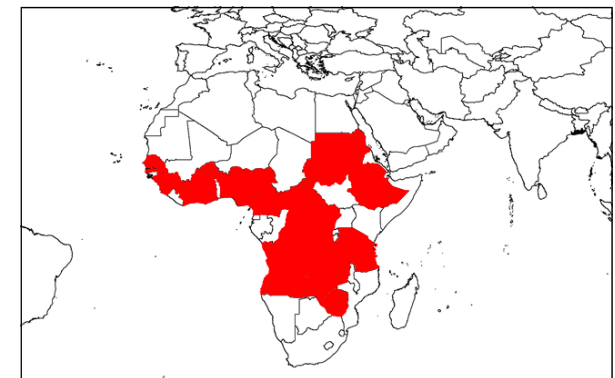
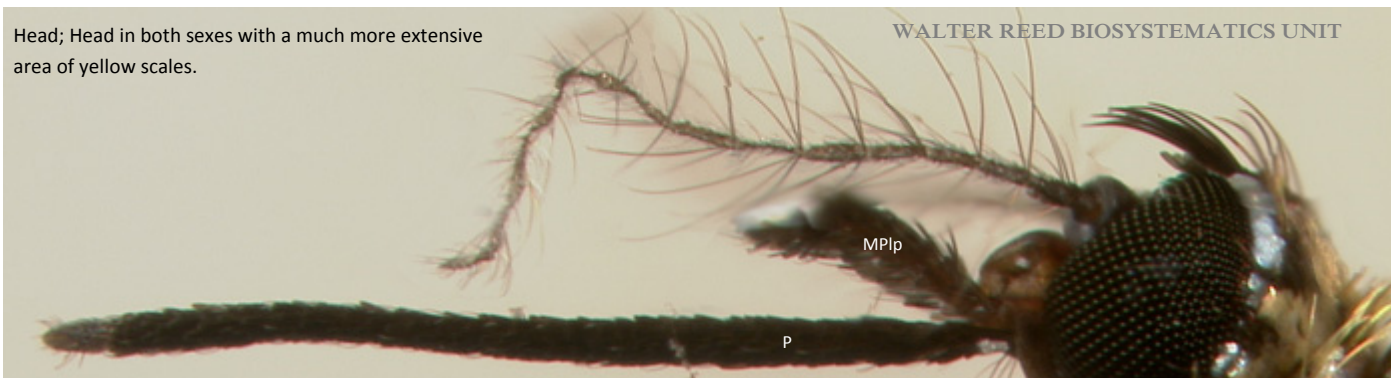


Aedes (Stegomyia) luteocephalus (Newstead, 1907), WRBU specimen AElut, Character descriptions: Edwards, 1941:151



Head; Head in both sexes with a much more extensive area of yellow scales.





Aedes (Stegomyia) luteocephalus (Newstead, 1907), WRBU specimen AElut, Character descriptions: Edwards, 1941:151



Male head.

No Photo Available

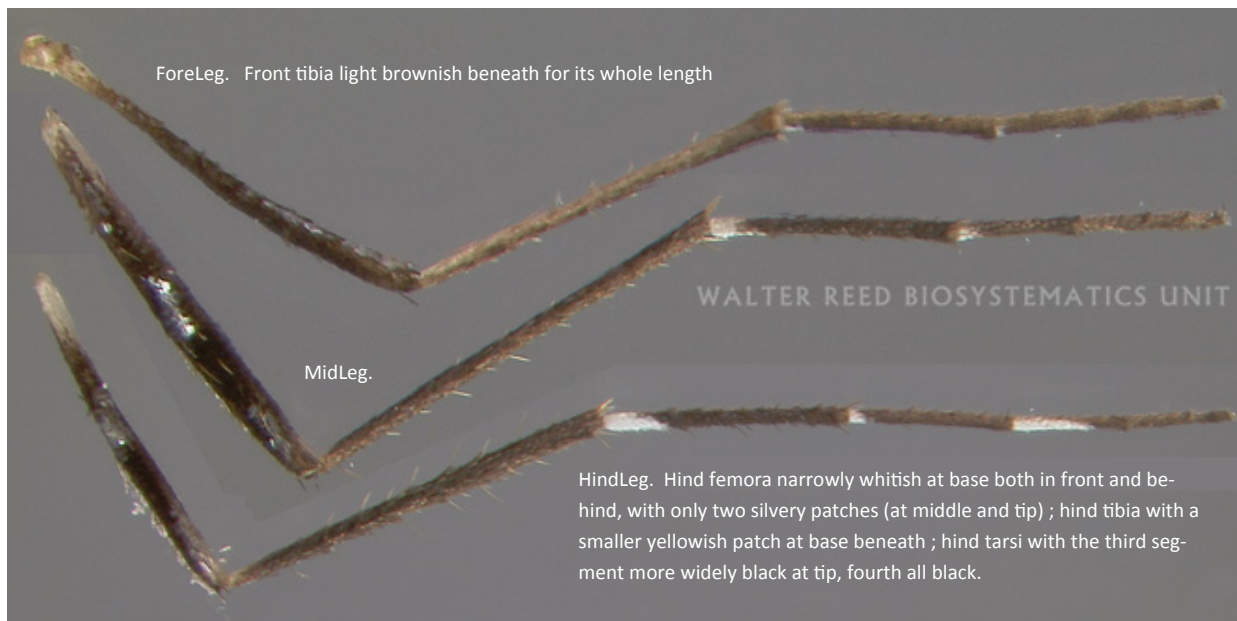


Abdomen with more or less obvious dull yellow basal bands on tergites 2-6.



Bionomics: The preferred larval habitats are tree holes and rot holes with bamboo. Bamboo stems and artificial containers are also utilized. Females have been captured biting man (Huang, 1990).

Medical Importance: This species is a vector of yellow fever in West and Central Africa. Chikungunya, Zika and dengue 2 viruses have also been isolated from *Ae. luteocephalus* (Huang, 1990).



ForeLeg. Front tibia light brownish beneath for its whole length

MidLeg.

HindLeg. Hind femora narrowly whitish at base both in front and behind, with only two silvery patches (at middle and tip) ; hind tibia with a smaller yellowish patch at base beneath ; hind tarsi with the third segment more widely black at tip, fourth all black.